

# Human Cardiotrophin 1 / CTF1 / CT 1 (Fc Tag) recombinant protein



Catalog Number: 500566

## General Information

### Protein Construction

A DNA sequence encoding the human CTF1(NP\_001321.1)(Ser2-Ala201) was expressed with the fused Fc region of human IgG1 at the N-terminus.

### Organism

Human

### Expression Host

Human Cells

## QC Testing

### Activity

Measured in a cell proliferation assay using TF-1 human erythroleukemic cells.

The ED<sub>50</sub> for this effect is typically 0.015-0.06 µg/mL.

### Purity

(76.0+8.5) % as determined by SDS-PAGE

### Endotoxin

< 1.0 EU per µg of the protein as determined by the LAL method

### Stability

Samples are stable for up to twelve months from date of receipt at -70°C

### Predicted N terminal

Glu

### Molecular Mass

The recombinant human CTF1/Fc is a disulfide-linked homodimer. The reduced monomer comprises 460 amino acids and has a predicted molecular mass of 49.5 kDa. The apparent molecular mass of the protein is approximately 54 and 37 kDa in SDS-PAGE under reducing conditions due to glycosylation.

### Formulation

Lyophilized from sterile PBS, pH 7.4.

1. 5 % trehalose and mannitol are added as protectants before lyophilization.

2. Please contact us for any concerns or special requirements.

## Usage Guide

### Storage

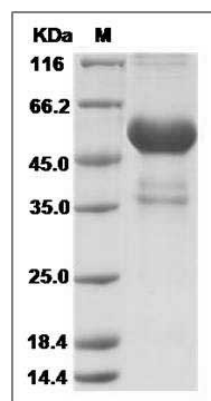
Store it under sterile conditions at -20°C to -80°C.

It is recommended that the protein be aliquoted for optimal storage. Avoid repeated freeze-thaw cycles.

### Reconstitution

Adding sterile water, prepare a stock solution of 0.25 mg/ml. Concentration is measured by UV-Vis.

### SDS-PAGE



Human Cardiotrophin-1 / CTF1 Protein (Fc Tag)  
SDS-PAGE