

# Anti-CaMKII alpha Rabbit antibody



Catalog Number: 167166

## Product name

Anti-CaMKII alpha Rabbit antibody

## Specificity

Human, Mouse, Rat

## Antibody description

CaMKII alpha Rabbit polyclonal antibody

## Preparation

Antigen: A synthetic peptide of human CaMKII

## Formulation

Supplied in 50nM Tris-Glycine(pH 7.4), 0.15M NaCl, 40%Glycerol, 0.01% sodium azide and 0.05% BSA.

## Storage

Store at -20°C. Stable for 12 months from date of receipt.

## Clonality

Polyclonal

## Ig Type

Rabbit IgG

## Applications

WB, ICC/IF, FC

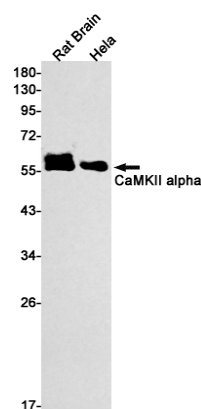
## Dilutions

WB: 1/1000-1/2000

ICC/IF: 1/20-1/100

FC: 1/20-1/100

## Validations



Western blot detection of CaMKII alpha in Rat Brain, HeLa cell lysates using CaMKII alpha Rabbit pAb(1:1000 diluted). Predicted band size: 54kDa. Observed band size: 54kDa.