

# Anti-DLL4 antibody



Catalog Number: 175166

## Product name

Anti-DLL4 antibody

## Specificity

Human, Mouse

## Antibody description

Rabbit polyclonal antibody to DLL4

## Preparation

This antigen of this antibody was synthetic peptide corresponding to n terminal human dll4.

## Formulation

Liquid, 1\*PBS (pH7.4), 0.2% BSA, 50% Glycerol.  
Preservative: 0.05% Sodium Azide.

## Storage

Store at +4°C after thawing. Aliquot store at -20°C. Avoid repeated freeze / thaw cycles.

## Clonality

Polyclonal

## Ig Type

Rabbit IgG

## Applications

WB, FC

## Dilutions

WB: 1:500-1:2,000

FC: 1:50-1:100

## Validations

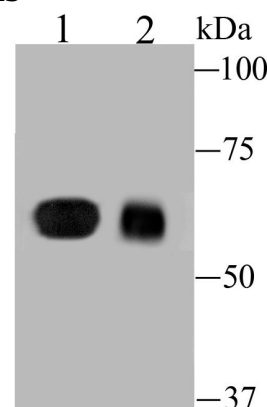


Fig1:: Western blot analysis of DLL4 on different lysates. Proteins were transferred to a PVDF membrane and blocked with 5% BSA in PBS for 1 hour at room temperature. The primary antibody (1/500) was used in 5% BSA at room temperature for 2 hours. Goat Anti-Rabbit IgG - HRP Secondary Antibody (HA1001) at 1:5,000 dilution was used for 1 hour at room temperature.; Positive control::; Lane 1: 293 cell lysate; Lane 2: Mouse placenta

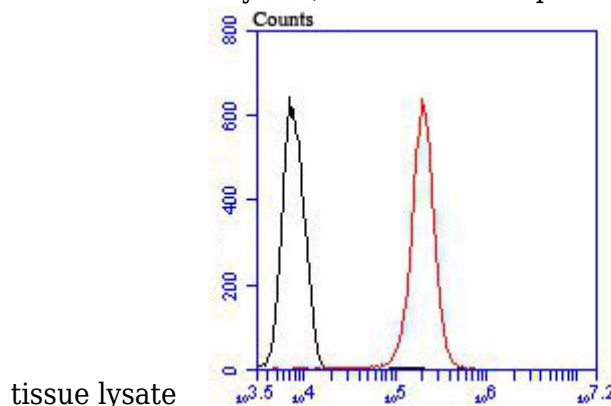


Fig2:: Flow cytometric analysis of DLL4 was done on 293T cells. The cells were fixed, permeabilized and stained with the primary antibody (1/100) (red). After incubation of the primary antibody at room temperature for an hour, the cells were stained with a Alexa Fluor 488-conjugated goat anti-rabbit IgG Secondary antibody at 1/500 dilution for 30 minutes. Unlabelled sample was used as a control (cells without incubation with primary antibody; black).