

PRAP1 antibody

Catalog Number: 114166

Product name

PRAP1 antibody

Specificity

Human, Mouse; other species not tested.

Antibody description

PRAP1 Rabbit Polyclonal antibody. Positive IHC detected in human liver tissue, human kidney tissue, mouse small intestine tissue. Positive WB detected in L02 cells, mouse pancreas tissue. Observed molecular weight by Western-blot: 16-20 kDa

Preparation

This antibody was obtained by immunization of PRAP1 recombinant protein (Accession Number: BC029447). Purification method: Antigen affinity purified.

Formulation

PBS with 0.1% sodium azide and 50% glycerol pH 7.3.

Storage

Store at -20°C. DO NOT ALIQUOT

Clonality

Polyclonal

Ig Type

Rabbit IgG

Applications

ELISA, WB, IHC

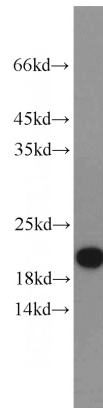
Dilutions

Recommended Dilution:

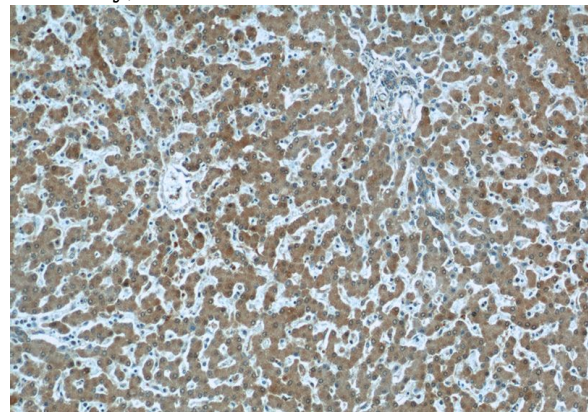
WB: 1:500-1:5000

IHC: 1:20-1:200

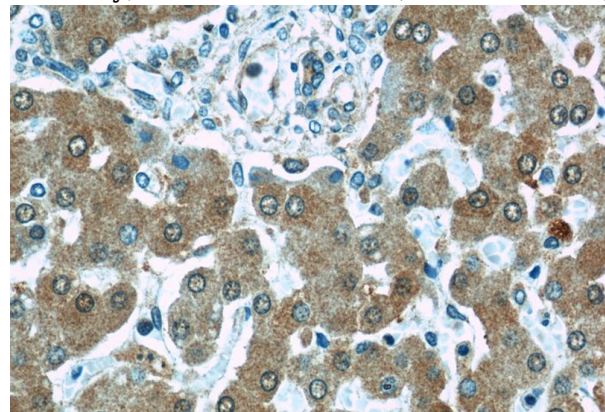
Validations



L02 cells were subjected to SDS PAGE followed by western blot with Catalog No:114166(PRAP1 antibody) at dilution of 1:1000



Immunohistochemical of paraffin-embedded human liver using Catalog No:114166(PRAP1 antibody) at dilution of 1:50 (under 10x lens)



Immunohistochemical of paraffin-embedded human liver using Catalog No:114166(PRAP1 antibody) at dilution of 1:50 (under 40x lens)