

# LC3B-Specific antibody

Catalog Number: 112166

## Product name

LC3B-Specific antibody

## Specificity

Human, Mouse, Rat; other species not tested.

## Antibody description

LC3B-Specific Rabbit Polyclonal antibody. Positive FC detected in HeLa cells. Positive IHC detected in human heart tissue, human testis tissue. Positive IF detected in Chloroquine treated HepG2 cells, Starvation treated HEK-293 cells. Positive WB detected in Chloroquine treated HEK-293 cells, HeLa cells, HepG2 cells, human brain tissue, MCF7 cells, mouse brain tissue, rat brain tissue, TN treated Hela cells, UV treated HEK-293 cells. Observed molecular weight by Western-blot: 15kDa, 18 kDa

## Preparation

This antibody was obtained by immunization of Peptide (Accession Number: NM\_022818). Purification method: Antigen affinity purified.

## Formulation

PBS with 0.02% sodium azide and 50% glycerol pH 7.3.

## Storage

Store at -20°C. DO NOT ALIQUOT

## Clonality

Polyclonal

## Ig Type

Rabbit IgG

## Applications

ELISA, IF, IHC, FC, WB

## Dilutions

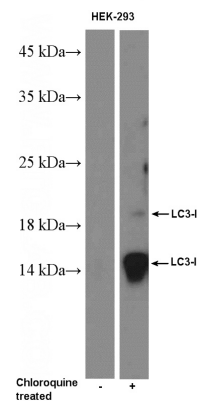
Recommended Dilution:

WB: 1:500-1:5000

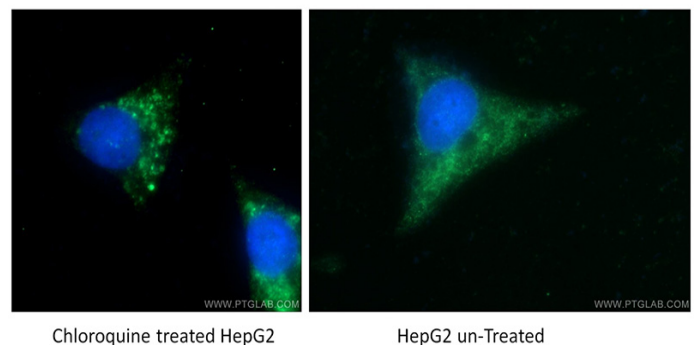
IHC: 1:20-1:200

IF: 1:20-1:200

## Validations



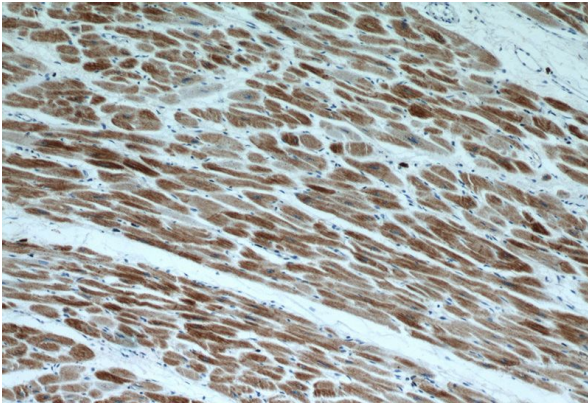
Chloroquine treated HEK-293 cells were subjected to SDS PAGE followed by western blot with Catalog No:112166(MAP1LC3B-Specific Antibody) at dilution of 1:1000



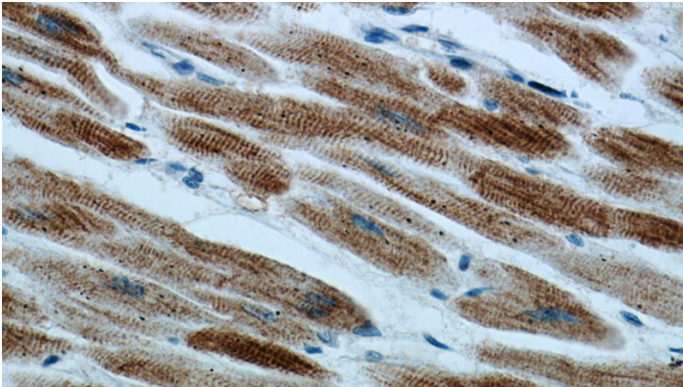
Immunofluorescent analysis of Chloroquine treated/untreated HepG2 cells using Catalog No:112166 (LC3B-Specific Antibody) at dilution of 1:50 and Alexa Fluor 488-conjugated AffiniPure Goat Anti-Rabbit IgG(H+L). Cells were fixed with ethanol at -20 oc.

# LC3B-Specific antibody

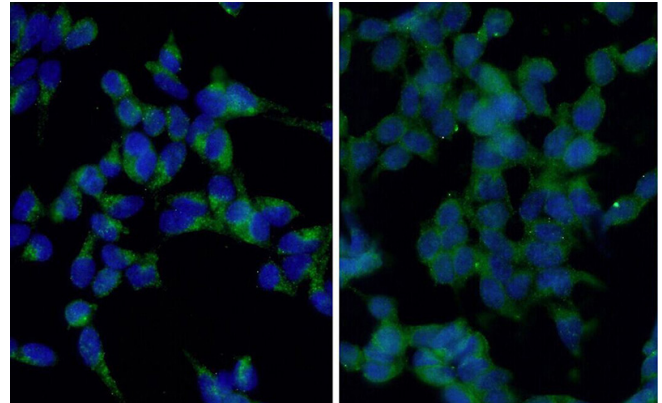
Catalog Number: 112166



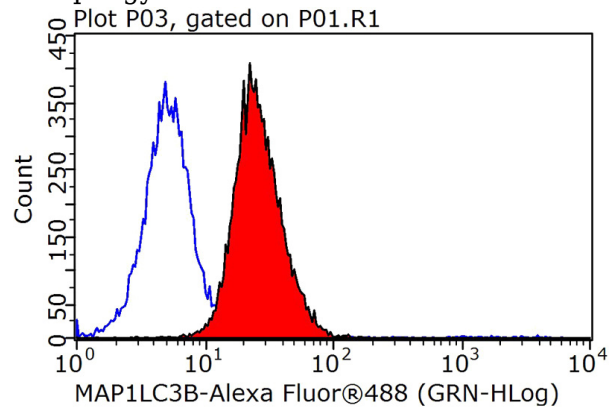
Immunohistochemical of paraffin-embedded human heart using Catalog No:112166 (LC3B-Specific antibody) at dilution of 1:100 (under 10x lens).



Immunohistochemical of paraffin-embedded human heart using Catalog No:112166 (LC3B-Specific antibody) at dilution of 1:100 (under 40x lens).



Immunofluorescent analysis of starvated HEK-293 cells using Catalog No:112166 (LC3B-Specific Antibody) at dilution of 1:50 and Alexa Fluor 488-conjugated AffiniPure Goat Anti-Rabbit IgG(H+L). Cells were fixed with ethanol at -20 °C. 20 mM chloroquine was used to block the autophagy flux.



$1 \times 10^6$  HeLa cells were stained with 0.2  $\mu$ g LC3B-Specific antibody (Catalog No:112166, red) and control antibody (blue). Fixed with 90% MeOH blocked with 3% BSA (30 min). Alexa Fluor 488-conjugated AffiniPure Goat Anti-Rabbit IgG(H+L) with dilution 1:1000.