

GSDMD antibody

Catalog Number: 111166

Product name

GSDMD antibody

IHC: 1:20-1:200

IF: 1:10-1:100

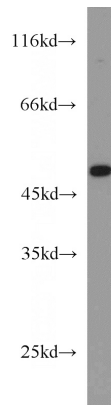
Specificity

Human; other species not tested.

Validations

Antibody description

GSDMD Rabbit Polyclonal antibody. Positive IF detected in HeLa cells. Positive IHC detected in human skin tissue. Positive WB detected in Jurkat cells. Observed molecular weight by Western-blot: 50-53 kDa



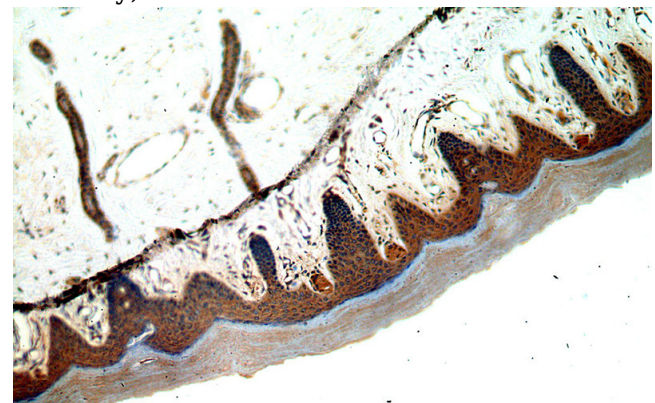
Preparation

This antibody was obtained by immunization of GSDMD recombinant protein (Accession Number: NM_024736). Purification method: Antigen affinity purified.

Jurkat cells were subjected to SDS PAGE followed by western blot with Catalog No:111166(GSDMD antibody) at dilution of 1:300

Formulation

PBS with 0.02% sodium azide and 50% glycerol pH 7.3.



Storage

Store at -20°C. DO NOT ALIQUOT

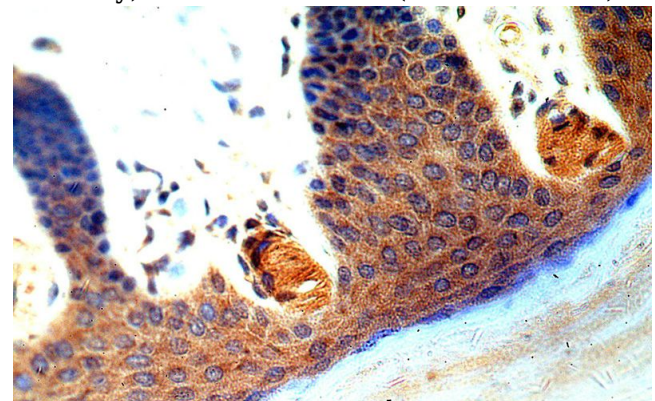
Clonality

Polyclonal

Immunohistochemical of paraffin-embedded human skin using Catalog No:111166(GSDMD antibody) at dilution of 1:50 (under 10x lens)

Ig Type

Rabbit IgG



Applications

ELISA, WB, IHC, IF

Dilutions

Recommended Dilution:

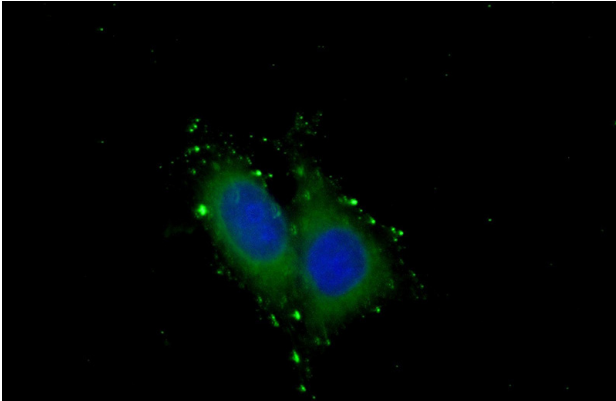
WB: 1:200-1:1000

Immunohistochemical of paraffin-embedded human skin using Catalog No:111166(GSDMD antibody) at dilution of 1:50 (under 10x lens)

GSDMD antibody

Catalog Number: 111166

antibody) at dilution of 1:50 (under 40x lens)



Immunofluorescent analysis of (-20oc Ethanol) fixed HeLa cells using Catalog No:111166(GSDMD Antibody) at dilution of 1:25 and Alexa Fluor 488-conjugated AffiniPure Goat Anti-Rabbit IgG(H+L)