

# Anti-ELAVL1 antibody



Catalog Number: 141166

## Product name

Anti-ELAVL1 antibody

## Specificity

Human ELAVL1

## Antibody description

Rabbit Polyclonal to Human ELAVL1

## Preparation

Produced in rabbits immunized with a synthetic peptide corresponding to the N-terminus of the Human ELAVL1, and purified by antigen affinity chromatography.

## Formulation

0.2 µm filtered solution in PBS

## Storage

This antibody can be stored at 2°C-8°C for one month without detectable loss of activity. Antibody products are stable for twelve months from date of receipt when stored at -20°C to -80°C.

Preservative-Free.

Sodium azide is recommended to avoid contamination (final concentration 0.05%-0.1%). It is toxic to cells and should be disposed of properly. Avoid repeated freeze-thaw cycles.

## Clonality

Polyclonal

## Ig Type

Rabbit IgG

## Applications

WB, ICC/IF, IF, IP

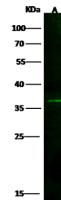
## Dilutions

WB: 10-30 µg/ml

ICC/IF: 0.5-3 µg/mL

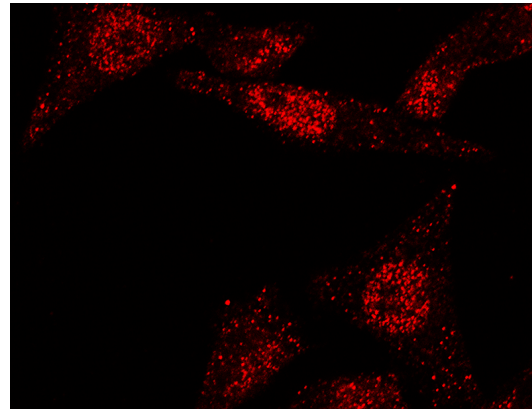
IP: 1-4 uL/mg of lysate

## Validations

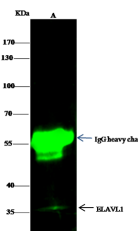


Lanes		A
Items	Sample (whole cell lysate)	Jurkat
	Sample Volume (µg/lane)	30
	Gel	13% SDS-PAGE reducing gel
	Recommended Concentration	10-30 µg/ml
	Secondary Antibody	Dylight 800 labeled Antibody to Rabbit IgG (H+L), at 1:5000 dilution.
		Developed using Odyssey imaging system.
Explanation		Predicted band size : 36 kDa Observed band size : 36 kDa

ELAVL1 Antibody, Rabbit PAb, Antigen Affinity Purified, Western blot



ELAVL1 Antibody, Rabbit PAb, Antigen Affinity Purified, Immunofluorescence



Lanes		A
Items	Sample (whole cell lysate)	293T
	Sample quantity	0.5 mg
	IP antibody quantity	2 µg
	Immunomagnetic beads Protein G	60 µg
	Gel	13% SDS-PAGE reducing gel
	Primary antibody	KLAF-SMCC-SINO A002 antibody at 10 µg/ml
	Secondary antibody	Dylight 800 labeled antibody to mouse IgG (H+L), at 1:5000 dilution

ELAVL1 Antibody, Rabbit PAb, Antigen Affinity Purified, Immunoprecipitation