

# EB3 antibody

Catalog Number: 110166

## Product name

EB3 antibody

## Specificity

Human, Mouse, Rat; other species not tested.

## Antibody description

EB3 Rabbit Polyclonal antibody. Positive WB detected in mouse brain tissue, rat brain tissue. Positive IHC detected in human skeletal muscle tissue, human brain tissue. Observed molecular weight by Western-blot: 30-36

## Preparation

This antibody was obtained by immunization of EB3 recombinant protein (Accession Number: XM\_047443728). Purification method: Antigen Affinity purified.

## Formulation

PBS with 0.02% sodium azide and 50% glycerol pH 7.3.

## Storage

Store at -20°C. DO NOT ALIQUOT

## Clonality

Polyclonal

## Ig Type

Rabbit IgG

## Applications

ELISA, WB, IHC

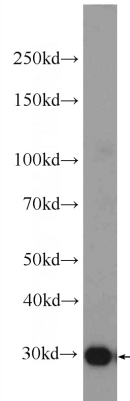
## Dilutions

Recommended Dilution:

WB: 1:500-1:5000

IHC: 1:20-1:200

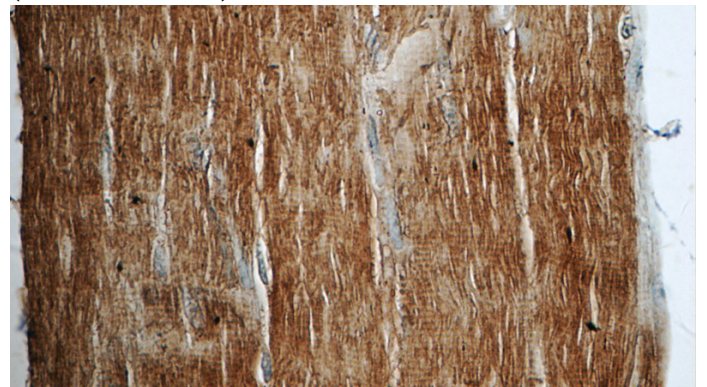
## Validations



mouse brain tissue were subjected to SDS PAGE followed by western blot with Catalog No:110166(MAPRE3 Antibody) at dilution of 1:1000



Immunohistochemistry of paraffin-embedded human skeletal muscle tissue slide using Catalog No:110166(MAPRE3 Antibody) at dilution of 1:50 (under 10x lens)



Immunohistochemistry of paraffin-embedded human skeletal muscle tissue slide using Catalog

# EB3 antibody



Catalog Number: 110166

---

No:110166(MAPRE3 Antibody) at dilution of 1:50 (under 40x lens)