

Anti-Phospho-Presenilin 2 (Ser330) Rabbit antibody



Catalog Number: 168866

Product name

Monoclonal

Anti-Phospho-Presenilin 2 (Ser330) Rabbit antibody

Ig Type

Rabbit IgG

Specificity

Human, Mouse, Rat

Applications

WB

Antibody description

Phospho-Presenilin 2 (Ser330) Rabbit monoclonal antibody

Dilutions

1:1000

Preparation

Antigen: A synthetic phosphopeptide corresponding to residues surrounding Ser330 of human Presenilin 2

Formulation

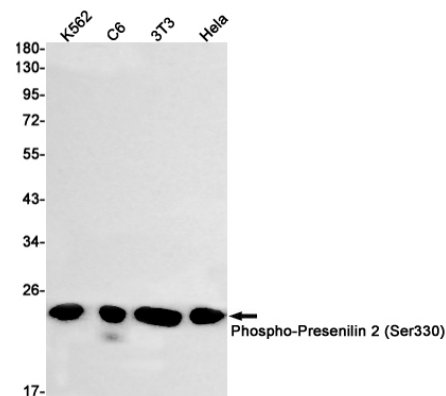
Supplied in 50nM Tris-Glycine(pH 7.4), 0.15M NaCl, 40%Glycerol, 0.01% sodium azide and 0.05% BSA.

Storage

Store at 4°C short term. Aliquot and store at -20°C long term. Avoid freeze / thaw cycle.

Clonality

Validations



Western blot detection of Phospho-Presenilin 2 (Ser330) in K562, C6, 3T3, HeLa cell lysates using Phospho-Presenilin 2 (Ser330) Rabbit mAb(1:1000 diluted). Predicted band size: 50kDa. Observed band size: 23kDa.