

# Integrin beta-6-Specific antibody



Catalog Number: 111866

## Product name

Integrin beta-6-Specific antibody

IHC: 1:20-1:200

IF: 1:50-1:500

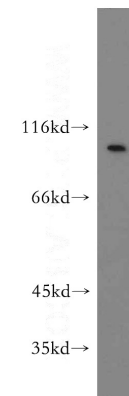
## Specificity

Human; other species not tested.

## Validations

## Antibody description

Integrin beta-6-Specific Rabbit Polyclonal antibody. Positive WB detected in A549 cells, A2780 cells. Positive IHC detected in human lung tissue. Positive IF detected in A549 cells. Observed molecular weight by Western-blot: 97 kDa



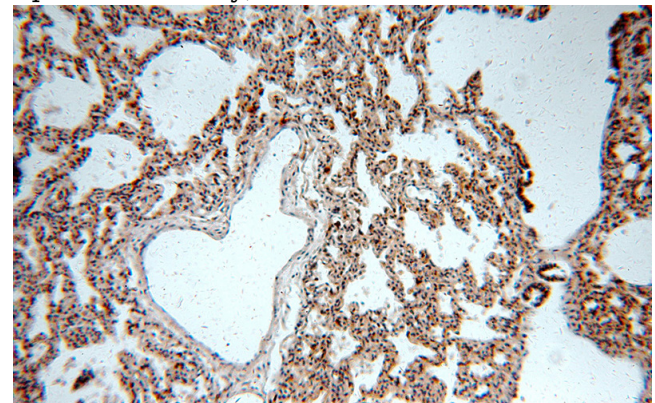
## Preparation

This antibody was obtained by immunization of Peptide (Accession Number: NM\_000888). Purification method: Antigen affinity purified.

A549 cells were subjected to SDS PAGE followed by western blot with Catalog No:111866(ITGB6-Specific antibody) at dilution of 1:500

## Formulation

PBS with 0.02% sodium azide and 50% glycerol pH 7.3.



## Storage

Store at -20°C. DO NOT ALIQUOT

## Clonality

Polyclonal

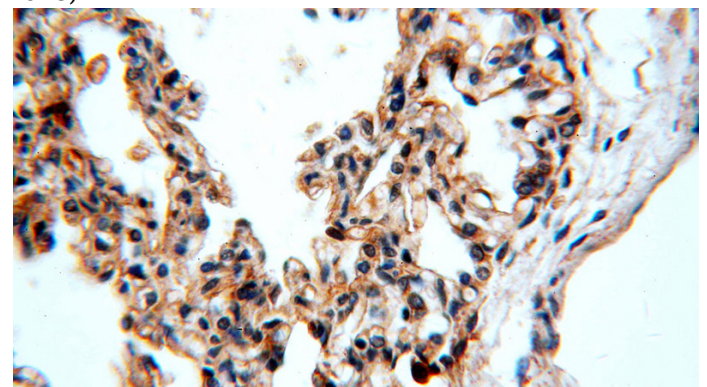
Immunohistochemical of paraffin-embedded human lung using Catalog No:111866(ITGB6-Specific antibody) at dilution of 1:100 (under 10x lens)

## Ig Type

Rabbit IgG

## Applications

ELISA, WB, IHC, IF



## Dilutions

Recommended Dilution:

WB: 1:500-1:5000

Immunohistochemical of paraffin-embedded

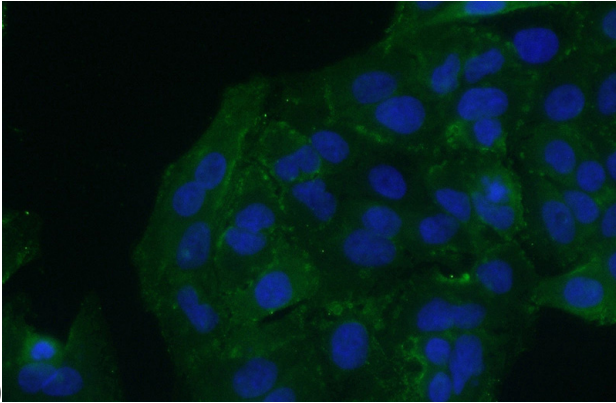
# Integrin beta-6-Specific antibody



Catalog Number: 111866

---

human lung using Catalog No:111866(IntGB6-Specific antibody) at dilution of 1:100 (under 40x



lens)

Immunofluorescent analysis of (10% Formaldehyde) fixed A549 cells using Catalog No:111866(Integrin beta-6-Specific Antibody) at dilution of 1:50 and Alexa Fluor 488-conjugated AffiniPure Goat Anti-Rabbit IgG(H+L)