

Human PSMA / FOLH1 (His Tag) recombinant protein



Catalog Number: 501866

General Information

Gene Name Synonym

Cell growth-inhibiting gene 27 protein; Folate hydrolase 1; Folylpoly-gamma-glutamate carboxypeptidase; Glutamate carboxypeptidase II; Membrane glutamate carboxypeptidase; N-acetylated-alpha-linked acidic dipeptidase I; Prostate-specific membrane antigen; Pteroylpoly-gamma-glutamate carboxypeptidase

Protein Construction

A DNA sequence encoding the human FOLH1 (NP_004467.1) (Lys44-Ala750) was expressed with a polyhistidine tag at the N-terminus.

Organism

Human

Expression Host

Human Cells

QC Testing

Purity

> 95 % as determined by SDS-PAGE.

Endotoxin

<1.0 EU per μ g protein as determined by the LAL method.

Stability

Samples are stable for up to twelve months from date of receipt at -70°C

Predicted N terminal

His

Molecular Mass

The recombinant human FOLH1 consists 725 amino acids and predicts a molecular mass of 81.7 kDa.

Formulation

Lyophilized from sterile PBS, pH 7.4.

1. 5 % trehalose and mannitol are added as protectants before lyophilization.
2. Please contact us for any concerns or special requirements.

Usage Guide

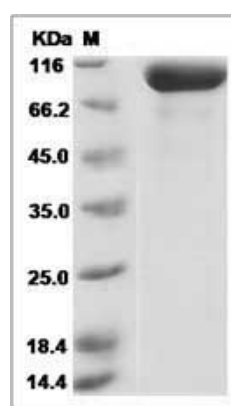
Storage

Store it under sterile conditions at -20°C to -80°C. It is recommended that the protein be aliquoted for optimal storage. Avoid repeated freeze-thaw cycles.

Reconstitution

Adding sterile water, prepare a stock solution of 0.25 mg/ml. Concentration is measured by UV-Vis.

SDS-PAGE



Human PSMA / FOLH1 Protein (His Tag)