

# Anti-bFGF/FGF2 antibody



Catalog Number: 100866

## Product name

Anti-bFGF/FGF2 antibody

WB: 0.5-1 µg/ml

IHC-P: 0.5-2 µg/mL

## Specificity

Human bFGF

## Validations

## Antibody description

Rabbit monoclonal to bFGF/FGF2

## Preparation

This antibody was obtained from a rabbit immunized with purified, synthetic peptide corresponding to the N-terminus of the Human bFGF.

## Formulation

0.2 µm filtered solution in PBS with 5% trehalose

## Storage

This antibody can be stored at 2°C-8°C for one month without detectable loss of activity. Antibody products are stable for twelve months from date of receipt when stored at -20°C to -80°C.

Preservative-Free.

Sodium azide is recommended to avoid contamination (final concentration 0.05%-0.1%). It is toxic to cells and should be disposed of properly. Avoid repeated freeze-thaw cycles.

## Clonality

Monoclonal

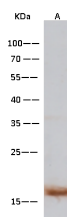
## Ig Type

Rabbit IgG

## Applications

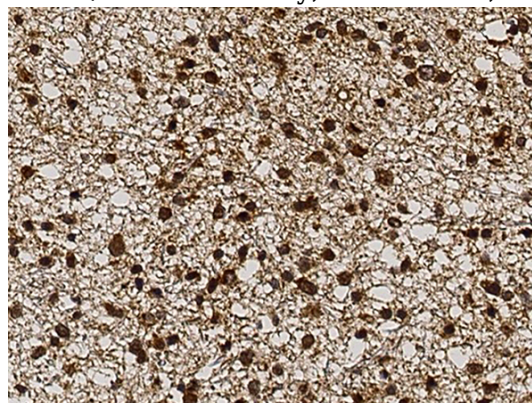
WB, IHC-P

## Dilutions



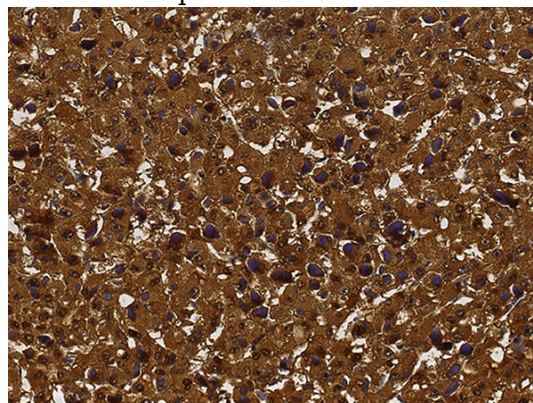
Items	Lanes	A
Sample (Recombinant protein)		bFGF
Sample Volume (ng/lane)		30
Gel		13% SDS-PAGE reducing gel
Recommended Concentration		0.5-1 µg/ml
Secondary Antibody		HRP Conjugated Goat anti-rabbit IgG FC at 1:1250 dilution

bFGF / FGF2 Antibody, Rabbit MAb, Western blot



bFGF / FGF2 Antibody, Rabbit MAb, Immunohistochemistry

Immunochemical staining of human bFGF in human glioma with rabbit monoclonal antibody (2 µg/mL, formalin-fixed paraffin embedded



sections).

bFGF / FGF2 Antibody, Rabbit MAb,

# Anti-bFGF/FGF2 antibody

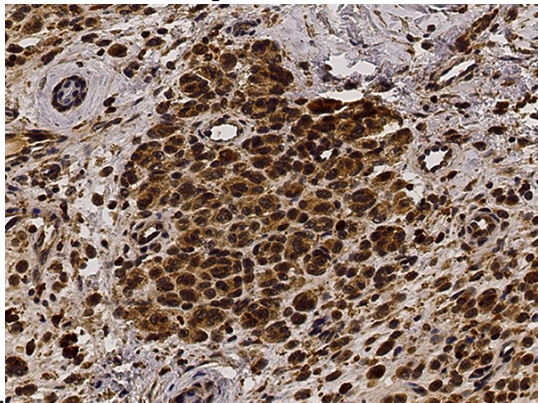


Catalog Number: 100866

---

## Immunohistochemistry

Immunochemical staining of human bFGF in human hepatoma with rabbit monoclonal antibody (2 µg/mL, formalin-fixed paraffin embedded



sections).

bFGF / FGF2 Antibody, Rabbit MAb,  
Immunohistochemistry

Immunochemical staining of human bFGF in human malignant melanoma with rabbit monoclonal antibody (2 µg/mL, formalin-fixed paraffin embedded sections).