

RBMX Polyclonal Antibody



Catalog Number: 160866

Product name

RBMX Polyclonal Antibody

Specificity

Human

Antibody description

Polyclonal antibody to RBMX

Preparation

Antigen: A synthetic peptide of human RBMX

Formulation

PBS with 0.02% sodium azide, pH7.3.

Storage

Store at 4°C. Avoid freeze / thaw cycles.

Clonality

Polyclonal

Ig Type

Rabbit IgG

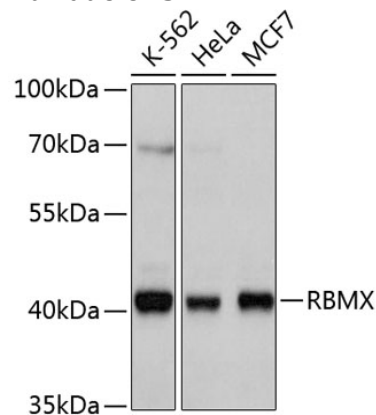
Applications

WB

Dilutions

WB 1:500 - 1:2000

Validations



Western blot - RBMX Polyclonal Antibody

Western blot analysis of extracts of various cell lines, using RBMX antibody at 1:1000 dilution. Secondary antibody: HRP Goat Anti-Rabbit IgG (H+L) at 1:10000 dilution. Lysates/proteins: 25ug per lane. Blocking buffer: 3% nonfat dry milk in TBST. Detection: ECL Basic Kit. Exposure time: 1s.