

SDF4 Polyclonal Antibody



Catalog Number: 164466

Product name

SDF4 Polyclonal Antibody

Specificity

Human

Antibody description

Polyclonal antibody to SDF4

Preparation

Antigen: A synthetic peptide of human SDF4

Formulation

PBS with 0.02% sodium azide, pH7.3.

Storage

Store at 4°C. Avoid freeze / thaw cycles.

Clonality

Polyclonal

Ig Type

Rabbit IgG

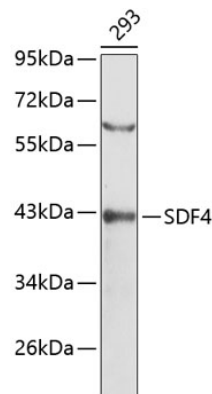
Applications

WB

Dilutions

WB 1:500 - 1:1000

Validations



Western blot - SDF4 Polyclonal Antibody

Western blot analysis of extracts of 293 cells, using SDF4 antibody. Secondary antibody: HRP Goat Anti-Rabbit IgG (H+L) at 1:10000 dilution. Lysates/proteins: 25ug per lane. Blocking buffer: 3% nonfat dry milk in TBST.