

Anti-p44/42 MAPK (ERK1/2) Rabbit antibody



Catalog Number: 169066

Product name

WB, IHC-P

Anti-p44/42 MAPK (ERK1/2) Rabbit antibody

Dilutions

Specificity

WB:1/1000IHC:1/50-1/100

Human, Mouse, Rat

Antibody description

p44/42 MAPK (ERK1/2) Rabbit polyclonal antibody

Preparation

Antigen: Peptide sequence around aa. 200~204 (F-L-T-E-Y) derived from Human p44/42 MAP Kinase.

Formulation

Supplied at 1.0mg/mL in phosphate buffered saline (without Mg²⁺ and Ca²⁺), pH 7.4, 150mM NaCl, 0.02% sodium azide and 50% glycerol.

Storage

Store at 4°C short term. Store at -20°C long term. Avoid freeze / thaw cycle.

Clonality

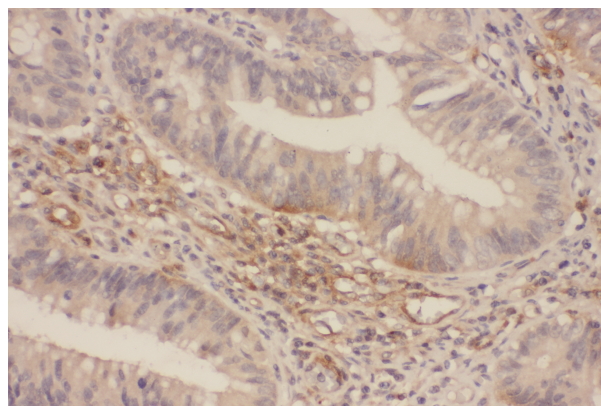
Polyclonal

Ig Type

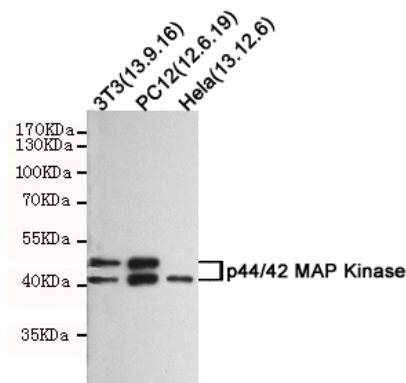
Rabbit IgG

Applications

Validations



Immunohistochemical analysis of paraffin-embedded human Colorectal tissue using p44/42 MAP Kinase (Ab-202) Antibody .



Western blot analysis of extracts from HeLa, PC-12 and 3T3 cells using p44/42 MAP Kinase (Ab-202) rabbit pAb (1:1000 diluted). Predicted band size: 42/44KDa. Observed band size: 42/44KDa.