

# Anti-CCL2 antibody

Catalog Number: 175066

## Product name

Anti-CCL2 antibody

## Specificity

Human, Mouse, Monkey

## Antibody description

Mouse monoclonal antibody to CCL2

## Preparation

This antigen of this antibody was recombinant protein

## Formulation

Liquid, 1\*TBS (pH7.4), 1%BSA, Preservative: 0.05% Sodium Azide.

## Storage

Store at +4°C after thawing. Aliquot store at -20°C or -80°C. Avoid repeated freeze / thaw cycles.

## Clonality

Monoclonal

## Ig Type

Mouse IgG1

## Applications

WB, ICC, IHC-P, FC

## Dilutions

WB: 1:500-1:1,000

ICC: 1:100-1:500

IHC-P: 1:100-1:500

FC: 1:100-1:200

## Validations

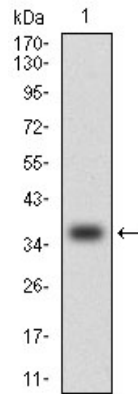


Fig1: Western blot analysis of CCL2 on human CCL2 recombinant protein using anti-CCL2 antibody at 1/1,000 dilution.

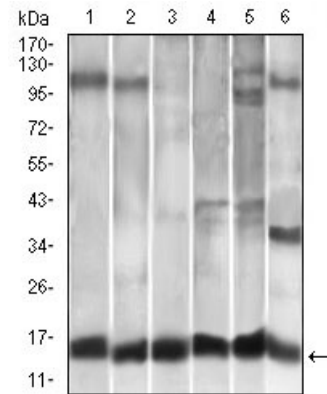


Fig2: Western blot analysis of CCL2 on different cell lysates using anti-CCL2 antibody at 1/1,000 dilution.; Positive control.; Lane 1: A549; Lane 2: HELA; Lane 3: Raw264.7; Lane 4: L1210; Lane 5: C6; Lane 6: Cos7

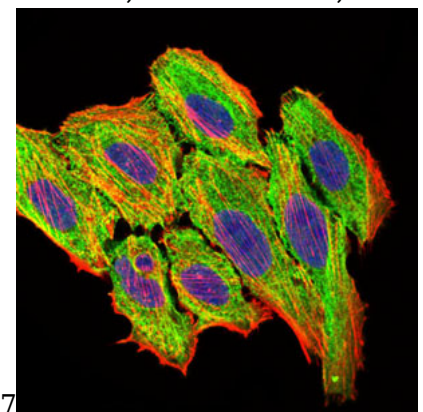


Fig3: ICC staining CCL2 (green) and actin filaments (red) in HepG2 cells. The nuclear counter stain is DAPI (blue). Cells were fixed in paraformaldehyde, permeabilised with 0.25% Triton X100/PBS.