

# Anti-CXCL5 antibody



Catalog Number: 105066

## Product name

Anti-CXCL5 antibody

## Immunogen

[Human CXCL5 recombinant protein](#)

## Specificity

Human CXCL5

## Antibody description

Rabbit polyclonal to CXCL5

## Preparation

Produced in rabbits immunized with purified, recombinant Human CXCL5 (rh CXCL5; P42830; Arg45-Asn114). CXCL5 specific IgG was purified by Human CXCL5 affinity chromatography.

## Formulation

0.2 µm filtered solution in PBS

## Storage

This antibody can be stored at 2°C-8°C for one month without detectable loss of activity. Antibody products are stable for twelve months from date of receipt when stored at -20°C to -80°C.

Preservative-Free.

Sodium azide is recommended to avoid contamination (final concentration 0.05%-0.1%). It is toxic to cells and should be disposed of properly. Avoid repeated freeze-thaw cycles.

## Clonality

Polyclonal

## Ig Type

Rabbit IgG

## Applications

ELISA, IHC-P

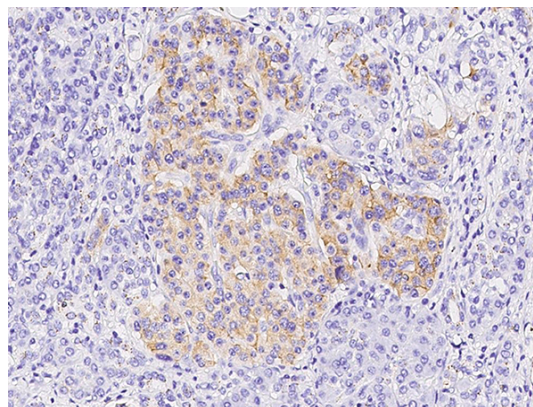
## Dilutions

ELISA: 0.1-0.2 µg/ml

This antibody can be used at 0.1-0.2 µg/ml with the appropriate secondary reagents to detect Human CXCL5.

IHC-P: 0.1-2 µg/mL

## Validations



CXCL5 Antibody, Rabbit PAb, Antigen Affinity Purified, Immunohistochemistry

Immunochemical staining of human CXCL5 in human pancreatic carcinoma with rabbit polyclonal antibody (1 µg/mL, formalin-fixed paraffin embedded sections).