

Human PI3/Elafin/WFDC14 (His Tag) recombinant protein



Catalog Number: 503066

General Information

Gene Name Synonym

Elastase-specific inhibitor; Peptidase inhibitor 3; Protease inhibitor WAP3; Skin-derived antileukoproteinase; WAP four-disulfide core domain protein 14

Protein Construction

A DNA sequence encoding the human PI3 (NP_002629.1) (Met 1-Gln 117) was fused with a polyhistidine tag at the C-terminus.

Organism

Human

Expression Host

Human Cells

QC Testing

Purity

> 92 % as determined by SDS-PAGE

Endotoxin

< 1.0 EU per μg of the protein as determined by the LAL method

Stability

Samples are stable for up to twelve months from date of receipt at -70°C

Predicted N terminal

Ala 23

Molecular Mass

The recombinant human PI3 consists of 106 amino acids and has a predicted molecular mass of 11.3 kDa. In SDS-PAGE under reducing conditions, the apparent molecular mass of rh PI3 is approximately 13-16 kDa.

Formulation

Lyophilized from sterile PBS, pH 7.4

1. 5 % trehalose and mannitol are added as protectants before lyophilization.

2. Please contact us for any concerns or special requirements.

Usage Guide

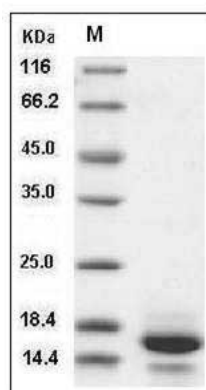
Storage

Store it under sterile conditions at -20°C to -80°C . It is recommended that the protein be aliquoted for optimal storage. Avoid repeated freeze-thaw cycles.

Reconstitution

Adding sterile water, prepare a stock solution of 0.25 mg/ml. Concentration is measured by UV-Vis.

SDS-PAGE



Human PI3 / Elafin / WFDC14 Protein (His Tag)
SDS-PAGE