

DcR2 antibody

Catalog Number: 109756

Product name

DcR2 antibody

IHC: 1:20-1:200

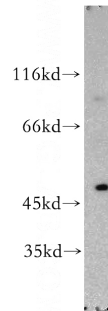
Specificity

Human; other species not tested.

Validations

Antibody description

DcR2 Rabbit Polyclonal antibody. Positive WB detected in Apoptosised HeLa cells, A549 cells, HeLa cells. Positive IHC detected in human kidney tissue. Observed molecular weight by Western-blot: 47-50 kDa



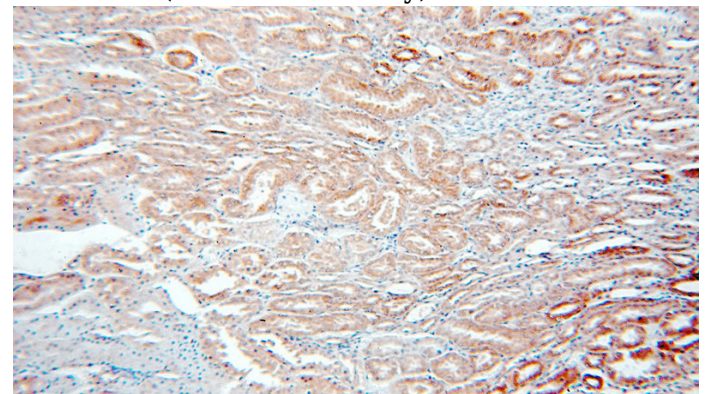
Preparation

This antibody was obtained by immunization of DcR2 recombinant protein (Accession Number: NM_003840). Purification method: Antigen affinity purified.

Apoptosised HeLa cells were subjected to SDS PAGE followed by western blot with Catalog No:109756(TRAILR4 antibody) at dilution of 1:300

Formulation

PBS with 0.02% sodium azide and 50% glycerol pH 7.3.



Storage

Store at -20°C. DO NOT ALIQUOT

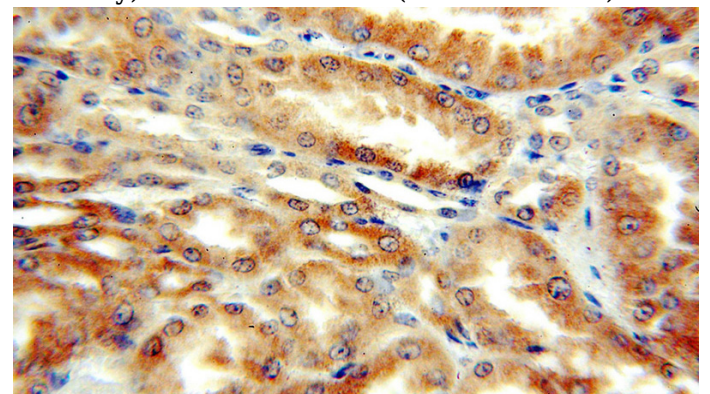
Clonality

Polyclonal

Immunohistochemical of paraffin-embedded human kidney using Catalog No:109756(TRAILR4 antibody) at dilution of 1:50 (under 10x lens)

Ig Type

Rabbit IgG



Applications

ELISA, WB, IHC

Dilutions

Recommended Dilution:

WB: 1:500-1:5000

Immunohistochemical of paraffin-embedded human kidney using Catalog No:109756(TRAILR4 antibody) at dilution of 1:50 (under 40x lens)