

# Anti-Synaptophysin Rabbit antibody



Catalog Number: 168756

## Product name

Rabbit IgG

Anti-Synaptophysin Rabbit antibody

## Applications

## Specificity

WB, IHC-P, ICC/IF

Human, Mouse, Rat

## Dilutions

## Antibody description

1:2000-1:10000

Synaptophysin Rabbit monoclonal antibody

1:20

## Preparation

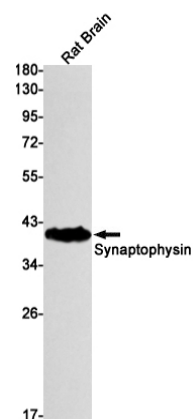
1:20

Antigen: A synthetic peptide of human Synaptophysin

## Validations

## Formulation

Supplied in 50nM Tris-Glycine(pH 7.4), 0.15M NaCl, 40%Glycerol, 0.01% sodium azide and 0.05% BSA.



## Storage

Store at 4°C short term. Aliquot and store at -20°C long term. Avoid freeze / thaw cycle.

Western blot detection of Synaptophysin in Rat Brain lysates using Synaptophysin Rabbit mAb(1:1000 diluted). Predicted band size:34kDa.Observed band size:38kDa.

## Clonality

Monoclonal

## Ig Type