

CNPY2,MSAP antibody



Catalog Number: 109356

Product name

CNPY2,MSAP antibody

Specificity

Human,Mouse,Rat; other species not tested.

Antibody description

CNPY2,MSAP Rabbit Polyclonal antibody. Positive FC detected in HepG2 cells. Positive IF detected in HepG2 cells. Positive IHC detected in human pancreas cancer tissue. Positive WB detected in mouse pancreas tissue, Huh7 cells, human liver tissue. Positive IP detected in HepG2 cells. Observed molecular weight by Western-blot: 21 kDa

Preparation

This antibody was obtained by immunization of CNPY2,MSAP recombinant protein (Accession Number: NM_014255). Purification method: Antigen affinity purified.

Formulation

PBS with 0.02% sodium azide and 50% glycerol pH 7.3.

Storage

Store at -20°C. DO NOT ALIQUOT

Clonality

Polyclonal

Ig Type

Rabbit IgG

Applications

ELISA, WB, IHC, IP, IF, FC

Dilutions

Recommended Dilution:

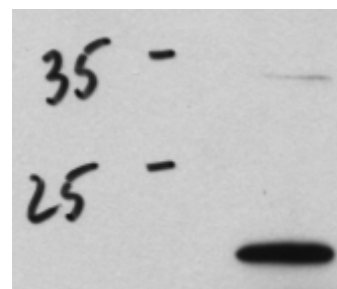
WB: 1:200-1:2000

IP: 1:200-1:2000

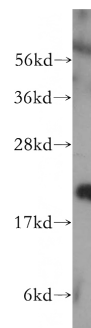
IHC: 1:20-1:200

IF: 1:20-1:200

Validations

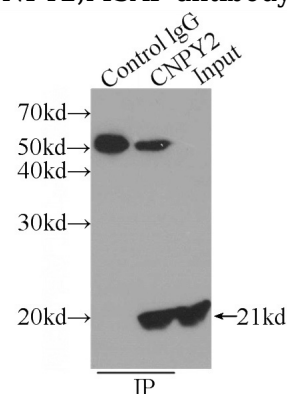


WB result of anti-CNPY2 (Catalog No:109356, 1:2000) with 40ug Huh7 cells by Dr.Dan



Lindholm.

mouse pancreas tissue were subjected to SDS PAGE followed by western blot with Catalog No:109356(CNPY2,MSAP antibody) at dilution of

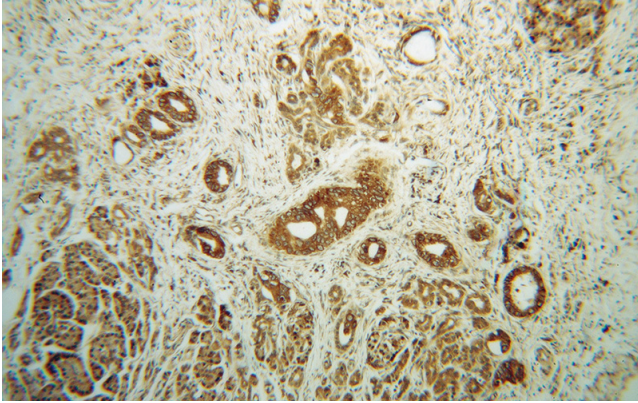


1:300

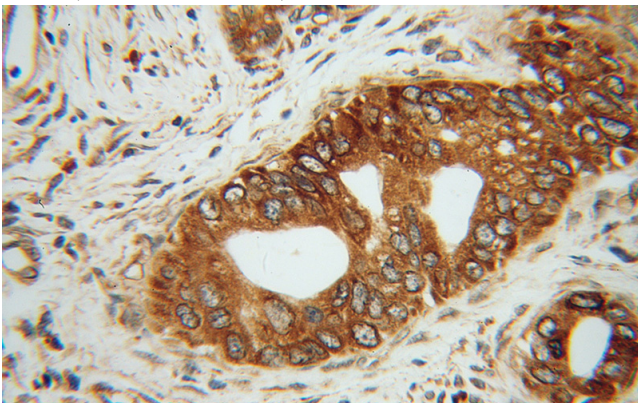
CNPY2,MSAP antibody

Catalog Number: 109356

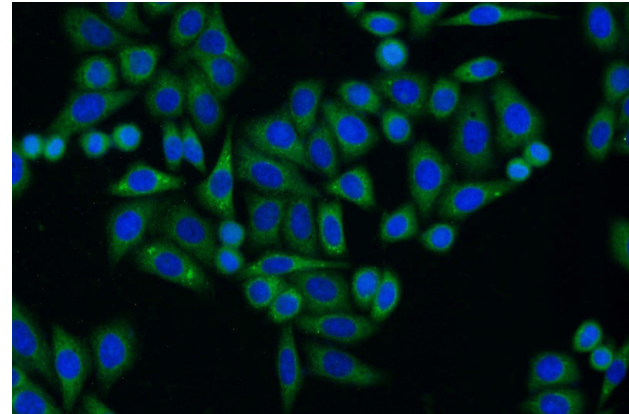
IP Result of anti-CNPY2,MSAP (IP:Catalog No:109356, 3ug; Detection:Catalog No:109356 1:500) with HepG2 cells lysate 600ug.



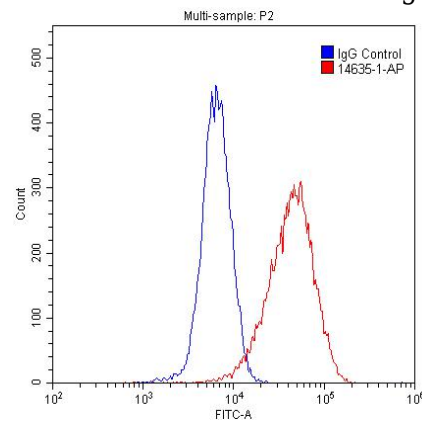
Immunohistochemical of paraffin-embedded human pancreas cancer using Catalog No:109356(CNPY2,MSAP antibody) at dilution of 1:50 (under 10x lens)



Immunohistochemical of paraffin-embedded human pancreas cancer using Catalog No:109356(CNPY2,MSAP antibody) at dilution of 1:50 (under 40x lens)



Immunofluorescent analysis of HepG2 cells using Catalog No:109356(CNPY2,MSAP Antibody) at dilution of 1:50 and Alexa Fluor 488-conjugated AffiniPure Goat Anti-Rabbit IgG(H+L)



1×10^6 HepG2 cells were stained with 0.2ug CNPY2,MSAP antibody (Catalog No:109356, red) and control antibody (blue). Fixed with 4% PFA blocked with 3% BSA (30 min). Alexa Fluor 488-conjugated AffiniPure Goat Anti-Rabbit IgG(H+L) with dilution 1:1500.