

# TREM1 antibody

Catalog Number: 116356

## Product name

TREM1 antibody

## Specificity

Human, Mouse; other species not tested.

## Antibody description

TREM1 Rabbit Polyclonal antibody. Positive WB detected in PC-3 cells, A549 cells, HepG2 cells, human liver tissue, human spleen tissue, mouse lung tissue. Positive IF detected in HepG2 cells. Positive FC detected in HeLa cells. Observed molecular weight by Western-blot: 30 kDa

## Preparation

This antibody was obtained by immunization of TREM1 recombinant protein (Accession Number: NM\_018643). Purification method: Antigen affinity purified.

## Formulation

PBS with 0.1% sodium azide and 50% glycerol pH 7.3.

## Storage

Store at -20°C. DO NOT ALIQUOT

## Clonality

Polyclonal

## Ig Type

Rabbit IgG

## Applications

ELISA, WB, IF, FC

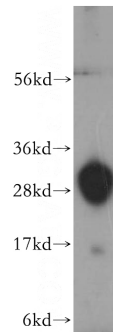
## Dilutions

Recommended Dilution:

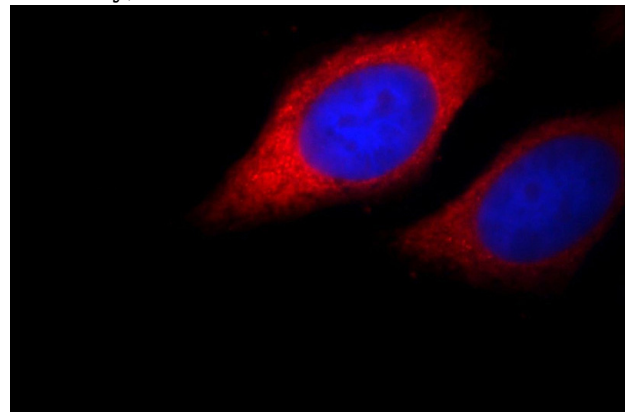
WB: 1:500-1:5000

IF: 1:10-1:100

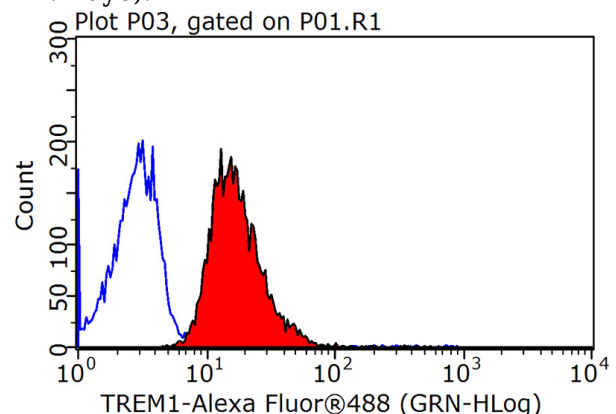
## Validations



PC-3 cells were subjected to SDS PAGE followed by western blot with Catalog No:116356(TREM1 antibody) at dilution of 1:400



Immunofluorescent analysis of HepG2 cells, using TREM1 antibody Catalog No:116356 at 1:25 dilution and Rhodamine-labeled goat anti-rabbit IgG (red).Blue pseudocolor = DAPI (fluorescent DNA dye).



1X10<sup>6</sup> HeLa cells were stained with 0.2ug

# TREM1 antibody



Catalog Number: 116356

---

TREM1 antibody (Catalog No:116356, red) and control antibody (blue). Fixed with 90% MeOH blocked with 3% BSA (30 min). Alexa Fluor 488-

conjugated AffiniPure Goat Anti-Rabbit IgG(H+L) with dilution 1:1500.