

# SLFN1 antibody



Catalog Number: 115356

## Product name

SLFN1 antibody

WB: 1:200-1:2000

IHC: 1:20-1:200

## Specificity

Human; other species not tested.

## Validations

## Antibody description

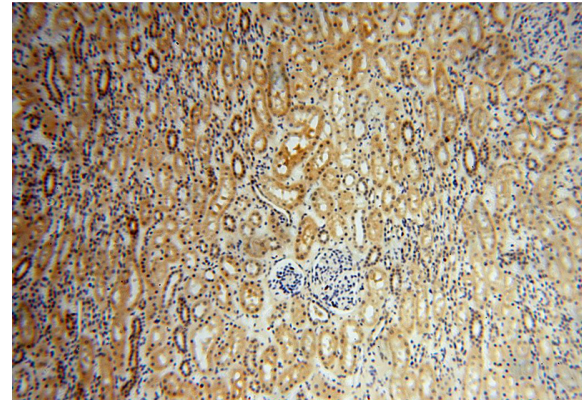
SLFN1 Rabbit Polyclonal antibody. Positive WB detected in COLO 320 cells. Positive IHC detected in human kidney tissue, human brain tissue, human liver tissue, human ovary tissue, human placenta tissue, human skin tissue, human spleen tissue, human testis tissue. Observed molecular weight by Western-blot: 46 kDa



## Preparation

This antibody was obtained by immunization of SLFN1 recombinant protein (Accession Number: XM\_006710432). Purification method: Antigen affinity purified.

COLO 320 cells were subjected to SDS PAGE followed by western blot with Catalog No:115356(SLFN1 antibody) at dilution of 1:800



## Formulation

PBS with 0.02% sodium azide and 50% glycerol pH 7.3.

Immunohistochemical of paraffin-embedded human kidney using Catalog No:115356(SLFN1 antibody) at dilution of 1:100 (under 10x lens)

## Storage

Store at -20°C. DO NOT ALIQUOT

## Clonality

Polyclonal

## Ig Type

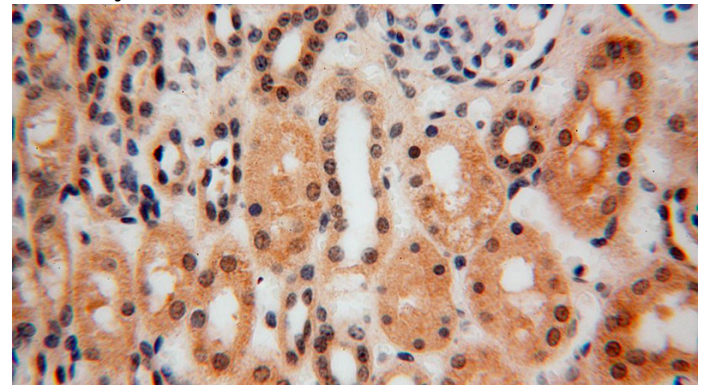
Rabbit IgG

## Applications

ELISA, WB, IHC

## Dilutions

Recommended Dilution:



Immunohistochemical of paraffin-embedded human kidney using Catalog No:115356(SLFN1

# SLFNL1 antibody



Catalog Number: 115356

---

antibody) at dilution of 1:100 (under 40x lens)