

HIRIP3 antibody



Catalog Number: 111356

Product name

HIRIP3 antibody

Specificity

Human, Mouse; other species not tested.

Antibody description

HIRIP3 Rabbit Polyclonal antibody. Positive WB detected in mouse skeletal muscle tissue, human heart tissue, human skeletal muscle tissue. Positive IHC detected in human ovary tissue, human heart tissue, human kidney tissue, human placenta tissue, human skin tissue, human testis tissue. Observed molecular weight by Western-blot: 69kd

Preparation

This antibody was obtained by immunization of HIRIP3 recombinant protein (Accession Number: NM_003609). Purification method: Antigen affinity purified.

Formulation

PBS with 0.02% sodium azide and 50% glycerol pH 7.3.

Storage

Store at -20°C. DO NOT ALIQUOT

Clonality

Polyclonal

Ig Type

Rabbit IgG

Applications

ELISA, WB, IHC

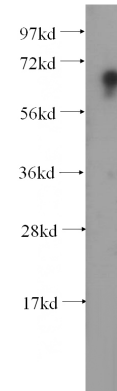
Dilutions

Recommended Dilution:

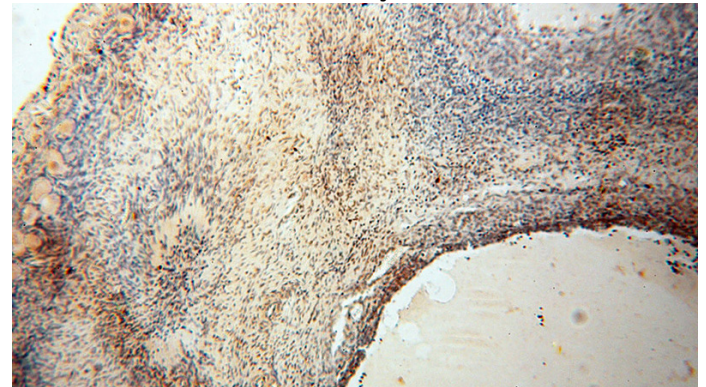
WB: 1:200-1:2000

IHC: 1:20-1:200

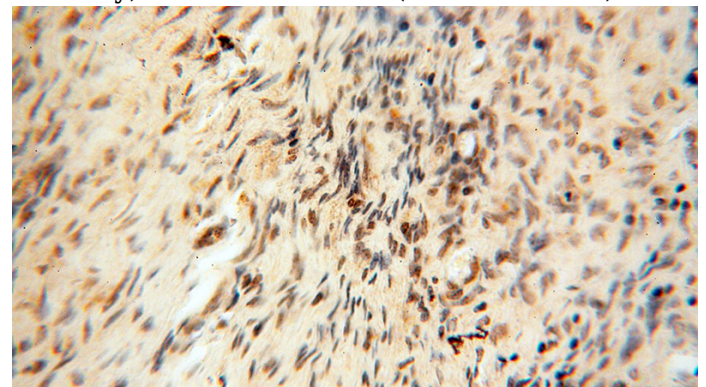
Validations



mouse skeletal muscle tissue were subjected to SDS PAGE followed by western blot with Catalog No:111356(HIRIP3 antibody) at dilution of 1:300



Immunohistochemical of paraffin-embedded human ovary using Catalog No:111356(HIRIP3 antibody) at dilution of 1:50 (under 10x lens)



Immunohistochemical of paraffin-embedded

HIRIP3 antibody



Catalog Number: 111356

human ovary using Catalog No:111356(HIRIP3 antibody) at dilution of 1:50 (under 40x lens)