

# Mouse EphA6 / EHK2 / Eph Receptor A6 (Fc Tag) recombinant protein



Catalog Number: 501356

## General Information

### Protein Construction

A DNA sequence encoding the extracellular domain of mouse EphA6 (NP\_031964.2) (Met 1-Gln 546) was fused with the Fc region of human IgG1 at the C-terminus.

### Organism

Mouse

### Expression Host

Human Cells

## QC Testing

### Activity

Measured by its binding ability in a functional ELISA. Immobilized mouse EphrinA3 at 1 µg/ml (100 µl/well) can bind mouse EPHA6 / chimera with a linear ranger of 6.25-400 ng/ml.

### Purity

> 90 % as determined by SDS-PAGE

### Endotoxin

< 1.0 EU per µg of the protein as determined by the LAL method

### Stability

Samples are stable for up to twelve months from date of receipt at -70°C

### Predicted N terminal

Ser 28

### Molecular Mass

The recombinant mouse EphA6/Fc is a disulfide-linked homodimer. The reduced monomer consists of 760 amino acids and has a predicted molecular mass of 85 kDa. In SDS-PAGE under reducing conditions, the apparent molecular mass of rm EphA6/Fc monomer is approximately 110 kDa due to glycosylation.

### Formulation

Lyophilized from sterile PBS, pH 7.4

1. 5 % trehalose and mannitol are added as protectants before lyophilization.

2. Please contact us for any concerns or special requirements.

## Usage Guide

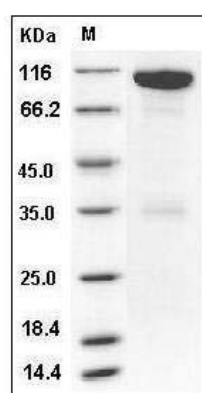
### Storage

Store it under sterile conditions at -20°C to -80°C. It is recommended that the protein be aliquoted for optimal storage. Avoid repeated freeze-thaw cycles.

### Reconstitution

Adding sterile water, prepare a stock solution of 0.25 mg/ml. Concentration is measured by UV-Vis.

### SDS-PAGE



Mouse EphA6 / EHK-2 Protein (Fc Tag) SDS-PAGE