

# ERGIC1 antibody



Catalog Number: 110356

## Product name

ERGIC1 antibody

WB: 1:500-1:5000

IP: 1:200-1:2000

## Specificity

Human, Mouse, Rat; other species not tested.

IHC: 1:20-1:200

IF: 1:20-1:200

## Antibody description

ERGIC1 Rabbit Polyclonal antibody. Positive IP detected in HepG2 cells. Positive WB detected in HepG2 cells, human liver tissue, L02 cells, mouse liver tissue. Positive IHC detected in human colon cancer tissue. Positive IF detected in HepG2 cells. Observed molecular weight by Western-blot: 32 kDa

## Preparation

This antibody was obtained by immunization of ERGIC1 recombinant protein (Accession Number: NM\_001031711). Purification method: Antigen affinity purified.

## Formulation

PBS with 0.02% sodium azide and 50% glycerol pH 7.3.

## Storage

Store at -20°C. DO NOT ALIQUOT

## Clonality

Polyclonal

## Ig Type

Rabbit IgG

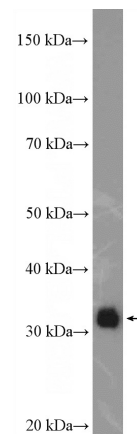
## Applications

ELISA, IHC, IP, WB, IF

## Dilutions

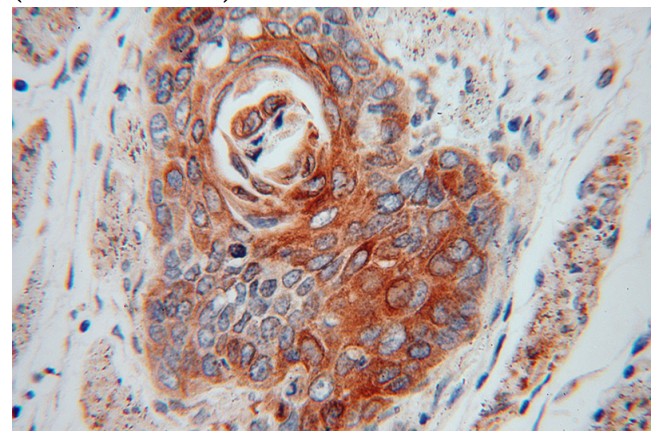
Recommended Dilution:

## Validations



HepG2 cells were subjected to SDS PAGE followed by western blot with Catalog No:110356(ERGIC1 Antibody) at dilution of 1:1500

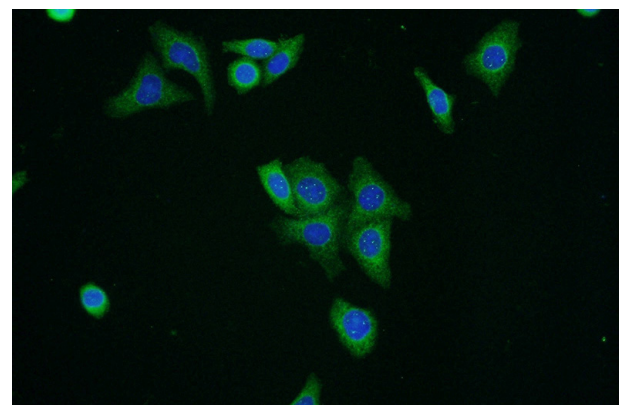
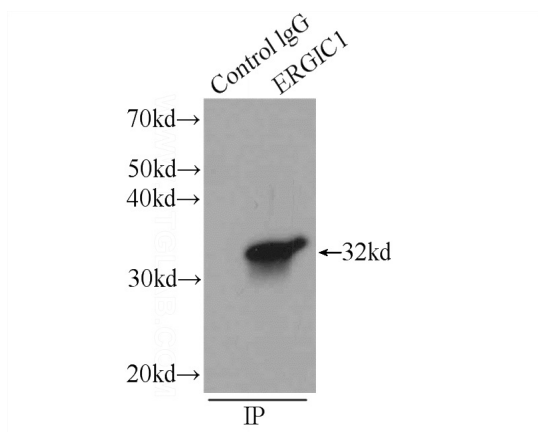
Immunohistochemical of paraffin-embedded human colon cancer using Catalog No:110356(ERGIC1 antibody) at dilution of 1:100 (under 10x lens)



Immunohistochemical of paraffin-embedded human colon cancer using Catalog No:110356(ERGIC1 antibody) at dilution of 1:100 (under 40x lens)

# ERGIC1 antibody

Catalog Number: 110356



IP Result of anti-ERGIC1 (IP:Catalog No:110356, 3ug; Detection:Catalog No:110356 1:500) with HepG2 cells lysate 1720ug.

Immunofluorescent analysis of HepG2 cells using Catalog No:110356(ERGIC1 Antibody) at dilution of 1:50 and Alexa Fluor 488-conjugated AffiniPure Goat Anti-Rabbit IgG(H+L)