

# MEPCE antibody

Catalog Number: 112656

## Product name

MEPCE antibody

IP: 1:200-1:1000

IF: 1:20-1:200

## Specificity

Human, Mouse, Rat; other species not tested.

## Antibody description

MEPCE Rabbit Polyclonal antibody. Positive IF detected in MCF-7 cells. Positive WB detected in MCF7 cells. Positive IP detected in MCF-7 cells. Observed molecular weight by Western-blot: 74 kDa

## Preparation

This antibody was obtained by immunization of MEPCE recombinant protein (Accession Number: NM\_019606). Purification method: Antigen affinity purified.

## Formulation

PBS with 0.02% sodium azide and 50% glycerol pH 7.3.

## Storage

Store at -20°C. DO NOT ALIQUOT

## Clonality

Polyclonal

## Ig Type

Rabbit IgG

## Applications

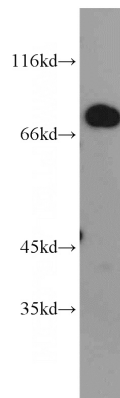
ELISA, WB, IF, IP

## Dilutions

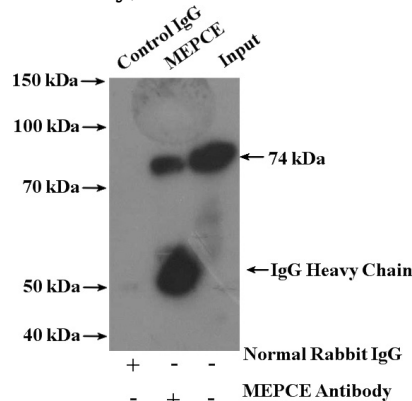
Recommended Dilution:

WB: 1:1000-1:10000

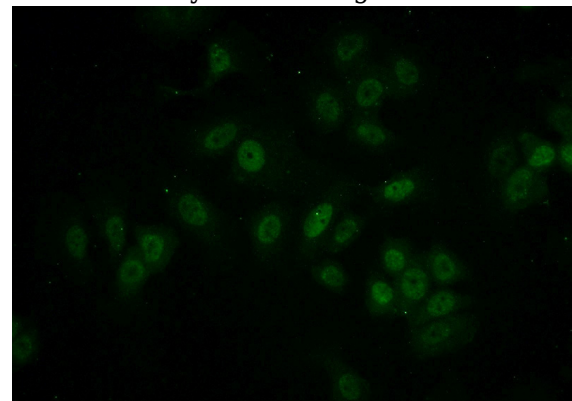
## Validations



MCF7 cells were subjected to SDS PAGE followed by western blot with Catalog No:112656(MEPCE antibody) at dilution of 1:2000



IP Result of anti-MEPCE (IP:Catalog No:112656, 4ug; Detection:Catalog No:112656 1:400) with MCF-7 cells lysate 3200ug.



Immunofluorescent analysis of (-20oc Ethanol) fixed MCF-7 cells using Catalog

# MEPCE antibody



Catalog Number: 112656

---

No:112656(MEPCE Antibody) at dilution of 1:50

and Alexa Fluor 488-conjugated AffiniPure Goat  
Anti-Rabbit IgG(H+L)