

# Anti-BTLA antibody



Catalog Number: 142656

## Product name

Anti-BTLA antibody

## Specificity

Mouse BTLA / CD272

## Antibody description

Rabbit Polyclonal to Mouse BTLA

## Preparation

Produced in rabbits immunized with a synthetic peptide corresponding to the C-terminus of the Mouse BTLA / CD272, and purified by antigen affinity chromatography.

## Formulation

0.2 µm filtered solution in PBS

## Storage

This antibody can be stored at 2°C-8°C for one month without detectable loss of activity. Antibody products are stable for twelve months from date of receipt when stored at -20°C to -80°C.

Preservative-Free.

Sodium azide is recommended to avoid contamination (final concentration 0.05%-0.1%). It

is toxic to cells and should be disposed of properly. Avoid repeated freeze-thaw cycles.

## Clonality

Polyclonal

## Ig Type

Rabbit IgG

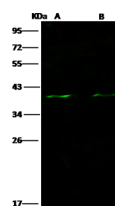
## Applications

WB

## Dilutions

WB: 5-20 µg/ml

## Validations



Items	Lanes	A	B
Sample (whole cell lysate)		Jurkat	MOLT4
Sample Volume (µg/lane)		30	30
Gel	13% SDS-PAGE reducing gel		
Recommended Concentration	5-20 µg/ml		
Secondary Antibody	Dylight 800-labeled Antibody To Rabbit IgG (H+L), at 1:5000 dilution.		
Explanation	Developed using Odyssey imaging system. Predicted band size : 33 kDa Observed band size : 39 kDa		

Mouse BTLA/CD272 Western blot (WB) 14662