

PSTPIP2 antibody

Catalog Number: 114256

Product name

PSTPIP2 antibody

Specificity

Human, Mouse, Rat; other species not tested.

Antibody description

PSTPIP2 Rabbit Polyclonal antibody. Positive WB detected in Raji cells. Positive IP detected in Raji cells. Observed molecular weight by Western-blot: 36 kDa

Preparation

This antibody was obtained by immunization of PSTPIP2 recombinant protein (Accession Number: BC035395). Purification method: Antigen affinity purified.

Formulation

PBS with 0.02% sodium azide and 50% glycerol pH 7.3.

Storage

Store at -20°C. DO NOT ALIQUOT

Clonality

Polyclonal

Ig Type

Rabbit IgG

Applications

ELISA, WB, IP

Dilutions

Recommended Dilution:

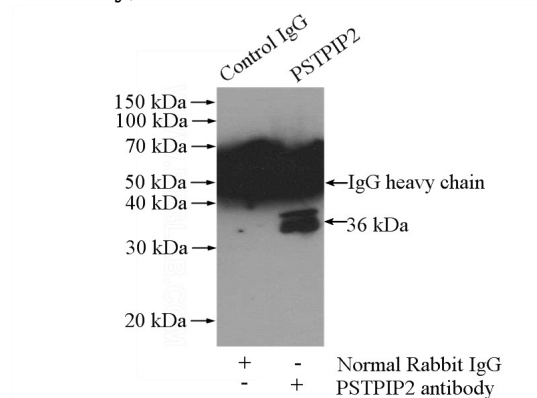
WB: 1:200-1:2000

IP: 1:200-1:2000

Validations



Raji cells were subjected to SDS PAGE followed by western blot with Catalog No:114256(PSTPIP2 antibody) at dilution of 1:500



IP Result of anti-PSTPIP2 (IP:Catalog No:114256, 4ug; Detection:Catalog No:114256 1:500) with Raji cells lysate 2000ug.