

# Anti-WDR5 Rabbit antibody



Catalog Number: 168956

## Product name

Anti-WDR5 Rabbit antibody

## Specificity

Human, Mouse, Rat

## Antibody description

WDR5 Rabbit monoclonal antibody

## Preparation

Antigen: A synthetic peptide of human WDR5

## Formulation

Supplied in 50nM Tris-Glycine(pH 7.4), 0.15M NaCl, 40%Glycerol, 0.01% sodium azide and 0.05% BSA.

## Storage

Store at 4°C short term. Aliquot and store at -20°C long term. Avoid freeze / thaw cycle.

## Clonality

Monoclonal

## Ig Type

Rabbit IgG

## Applications

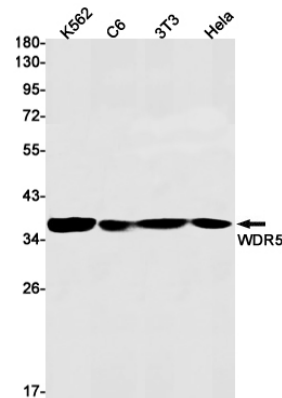
WB, FC

## Dilutions

WB: 1/1000

FC: 1/20

## Validations



Western blot detection of WDR5 in K562,C6,3T3,HeLa cell lysates using WDR5 Rabbit mAb(1:1000 diluted).Predicted band size:37kDa.Observed band size:37kDa.