

# NARS2 antibody



Catalog Number: 112956

## Product name

NARS2 antibody

WB: 1:500-1:5000

IHC: 1:20-1:200

## Specificity

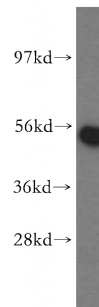
Human, Mouse, Rat; other species not tested.

IF: 1:50-1:500

## Validations

## Antibody description

NARS2 Rabbit Polyclonal antibody. Positive IHC detected in human kidney tissue, human heart tissue, human lung tissue, human placenta tissue, human spleen tissue. Positive IF detected in HepG2 cells. Positive WB detected in human liver tissue, HepG2 cells, human brain tissue. Observed molecular weight by Western-blot: 54 kDa



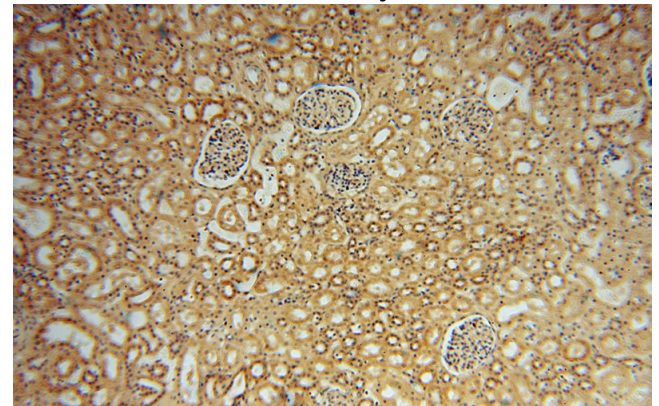
## Preparation

This antibody was obtained by immunization of NARS2 recombinant protein (Accession Number: NM\_024678). Purification method: Antigen affinity purified.

human liver tissue were subjected to SDS PAGE followed by western blot with Catalog No:112956(NARS2 antibody) at dilution of 1:500

## Formulation

PBS with 0.02% sodium azide and 50% glycerol pH 7.3.



## Storage

Store at -20°C. DO NOT ALIQUOT

## Clonality

Polyclonal

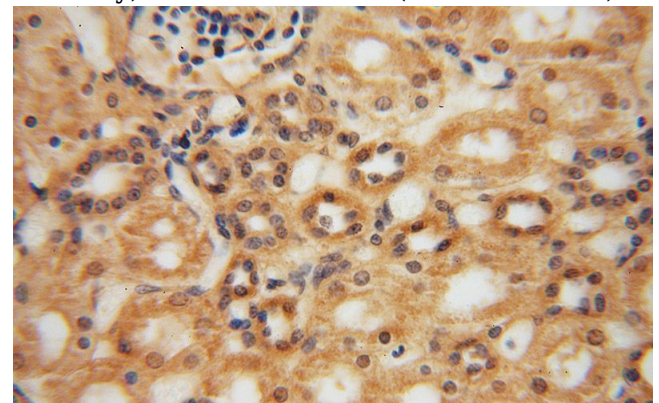
Immunohistochemical of paraffin-embedded human kidney using Catalog No:112956(NARS2 antibody) at dilution of 1:50 (under 10x lens)

## Ig Type

Rabbit IgG

## Applications

ELISA, WB, IHC, IF



## Dilutions

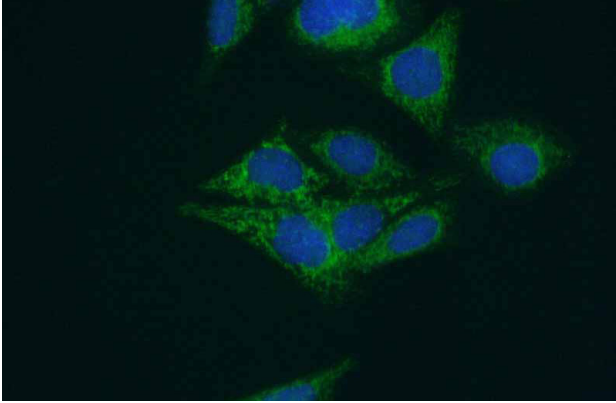
Recommended Dilution:

# NARS2 antibody

Catalog Number: 112956

---

Immunohistochemical of paraffin-embedded human kidney using Catalog No:112956(NARS2 antibody) at dilution of 1:50 (under 40x lens)



Immunofluorescent analysis of (10% Formaldehyde) fixed HepG2 cells using Catalog No:112956(NARS2 Antibody) at dilution of 1:50 and Alexa Fluor 488-conjugated AffiniPure Goat Anti-Rabbit IgG(H+L)