

# MCM6 antibody

Catalog Number: 112556

## Product name

MCM6 antibody

## Specificity

Human, Mouse, Rat; other species not tested.

## Antibody description

MCM6 Rabbit Polyclonal antibody. Positive WB detected in mouse testis tissue, HeLa cells, Jurkat cells, mouse ovary tissue, mouse spleen tissue, mouse thymus tissue. Positive IP detected in HeLa cells. Positive IHC detected in human cervical cancer tissue, human lung cancer tissue. Positive IF detected in HeLa cells. Observed molecular weight by Western-blot: 105 kDa

## Preparation

This antibody was obtained by immunization of MCM6 recombinant protein (Accession Number: NM\_005915). Purification method: Antigen affinity purified.

## Formulation

PBS with 0.02% sodium azide and 50% glycerol pH 7.3.

## Storage

Store at -20°C. DO NOT ALIQUOT

## Clonality

Polyclonal

## Ig Type

Rabbit IgG

## Applications

ELISA, WB, IP, IHC, IF

## Dilutions

Recommended Dilution:

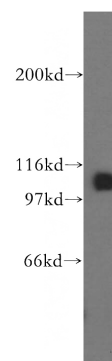
WB: 1:500-1:5000

IP: 1:500-1:5000

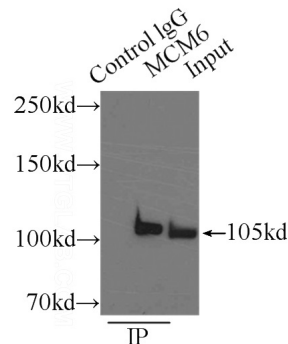
IHC: 1:20-1:200

IF: 1:50-1:500

## Validations



mouse testis tissue were subjected to SDS PAGE followed by western blot with Catalog No:112556(MCM6 antibody) at dilution of 1:500

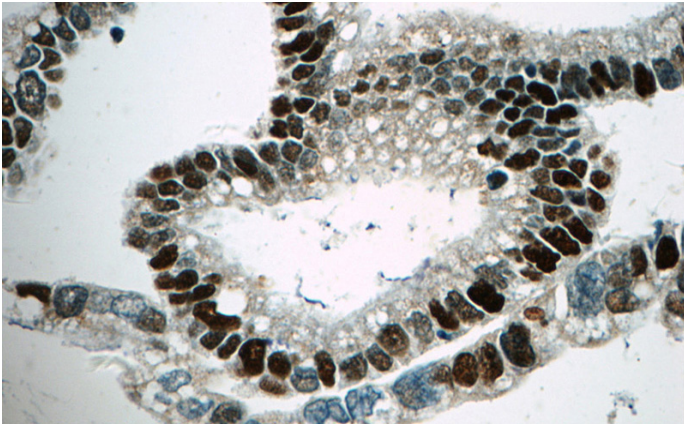


IP Result of anti-MCM6 (IP:Catalog No:112556, 3ug; Detection:Catalog No:112556 1:1000) with HeLa cells lysate 3800ug.

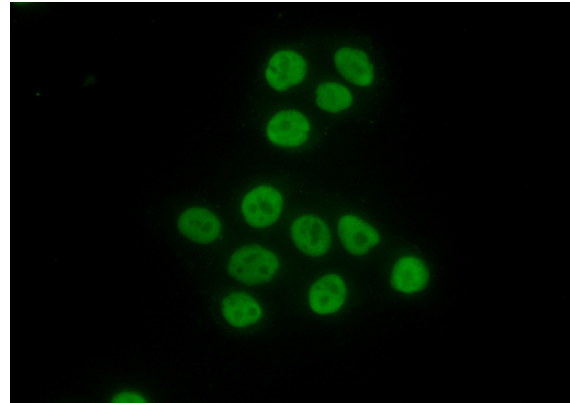
# MCM6 antibody

Catalog Number: 112556

---



Immunohistochemistry of paraffin-embedded human cervical cancer tissue slide using Catalog No:112556(MCM6 Antibody) at dilution of 1:50 (under 40x lens)



Immunofluorescent analysis of (10% Formaldehyde) fixed HeLa cells using Catalog No:112556(MCM6 Antibody) at dilution of 1:50 and Alexa Fluor 488-conjugated AffiniPure Goat Anti-Rabbit IgG(H+L)