

# Refanezumab reference antibody



Catalog Number: 177156

## Product name

Refanezumab reference antibody

## Specificity

Human Siglec-4a / MAG

## Antibody description

Anti-Siglec-4a / MAG Antibody (Refanezumab)

## Preparation

Recombinant expression and purified from CHO cells.

## Formulation

0.1 M Pro-Ac, 20 mM Arg, pH 5.0

## Storage

-80°C for 2 years under sterile conditions; -20°C for 1 year under sterile conditions; Avoid repeated freeze-thaw cycles.

## Clonality

Monoclonal

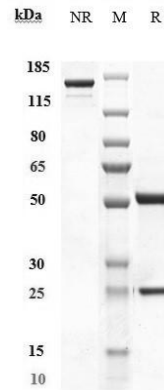
## Ig Type

IgG1

## Applications

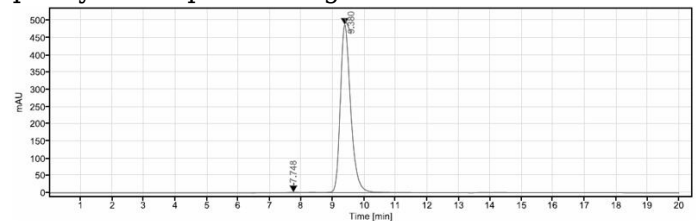
ELISA

## Validations



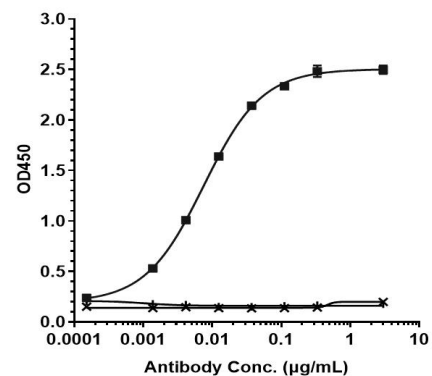
## SDS-PAGE

Anti-Siglec-4a / MAG Antibody (refanezumab) on SDS-PAGE under reducing (R) condition. The purity of the protein is greater than 90%.



## SEC-HPLC

The purity of Anti-Siglec-4a / MAG Antibody (refanezumab) is 99.41%, determined by SEC-



## HPLC.

Bioactivity: ELISA

Immobilized human Siglec 4a / MAG, Fc Tag at 2 ug/mL can bind Anti-Siglec-4a / MAG Antibody (refanezumab), EC50=0.007489 ug/mL.