

Anti-Cleaved-Caspase-3 p17 Rabbit antibody



Catalog Number: 167156

Product name

Anti-Cleaved-Caspase-3 p17 Rabbit antibody

Specificity

Human

Antibody description

Cleaved-Caspase-3 p17 Rabbit polyclonal antibody

Preparation

Antigen: A synthesized peptide derived from human active Caspase-3

Formulation

Rabbit IgG in phosphate buffered saline , pH 7.4, 150mM NaCl, 0.02% sodium azide and 50% glycerol.

Storage

Store at +4°C short term. Store at -20°C long term. Avoid freeze / thaw cycle.

Clonality

Polyclonal

Ig Type

Rabbit IgG

Applications

WB, IHC-P, ICC/IF

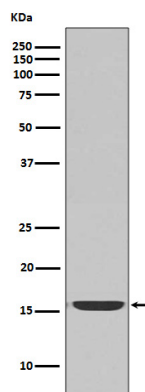
Dilutions

1:500~1:2000

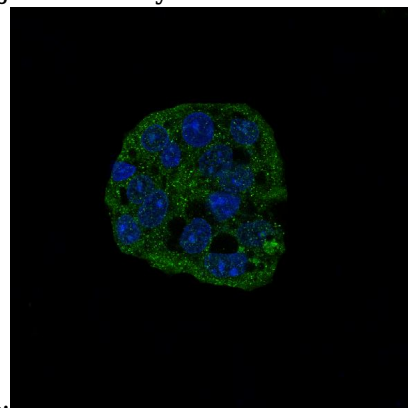
1:50~1:100

1:50~1:100

Validations

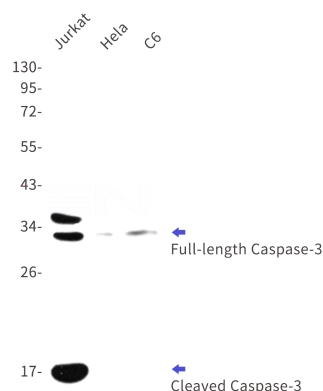


Western blot analysis of active Caspase-3 expression in Jurkat cell lysate treated with



Camptothecin.

Immunofluorescent analysis of HepG2 cells, using active Caspase-3 Antibody .



Western blot analysis of active Caspase-3 expression in Jurkat,C6 and Hela cell lysates using active Caspase-3 antibody at 1/1000 dilution.Predicted band size:17kDa.Observed band size:35,32,17kDa.