

# SFTPA1 / Surfactant Protein A antibody



Catalog Number: 115156

---

## Product name

SFTPA1 / Surfactant Protein A antibody

## Specificity

Human; other species not tested.

## Antibody description

SFTPA1 / Surfactant Protein A Rabbit Polyclonal antibody. Positive IHC detected in human lung cancer tissue, human brain tissue, human heart tissue, human kidney tissue, human lung tissue, human ovary tissue, human placenta tissue, human skin tissue, human spleen tissue.

## Preparation

This antibody was obtained by immunization of SFTPA1 / Surfactant Protein A recombinant protein (Accession Number: BC026229). Purification method: Antigen affinity purified.

## Formulation

PBS with 0.1% sodium azide and 50% glycerol pH 7.3.

## Storage

Store at -20°C. DO NOT ALIQUOT

## Clonality

Polyclonal

## Ig Type

Rabbit IgG

## Applications

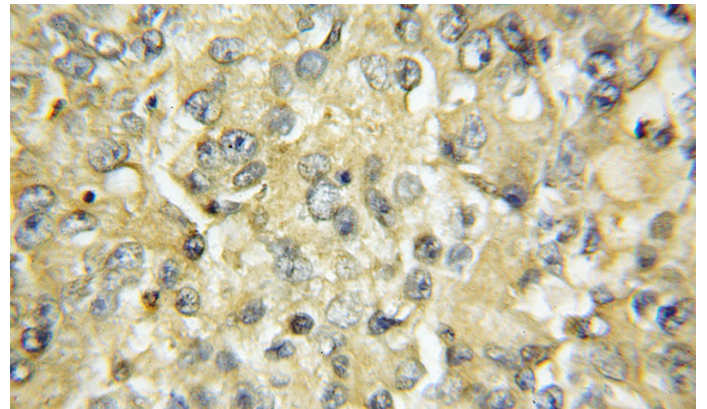
ELISA, IHC

## Dilutions

Recommended Dilution:

IHC: 1:20-1:200

## Validations



Immunohistochemical of paraffin-embedded human lung cancer using Catalog No:115156(SFTPA1 antibody) at dilution of 1:50 (under 10x lens)