

# LATS1 antibody

Catalog Number: 112156

## Product name

LATS1 antibody

## Specificity

Human, Mouse, Rat; other species not tested.

## Antibody description

LATS1 Rabbit Polyclonal antibody. Positive WB detected in mouse testis tissue, K-562 cells, mouse cerebellum tissue, SH-SY5Y cells. Positive IHC detected in human testis tissue. Observed molecular weight by Western-blot: 140kd, 120kd

## Preparation

This antibody was obtained by immunization of LATS1 recombinant protein (Accession Number: BC015665). Purification method: Antigen affinity purified.

## Formulation

PBS with 0.02% sodium azide and 50% glycerol pH 7.3.

## Storage

Store at -20°C. DO NOT ALIQUOT

## Clonality

Polyclonal

## Ig Type

Rabbit IgG

## Applications

ELISA, WB, IHC

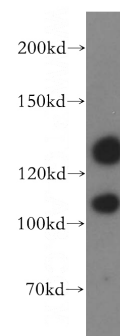
## Dilutions

Recommended Dilution:

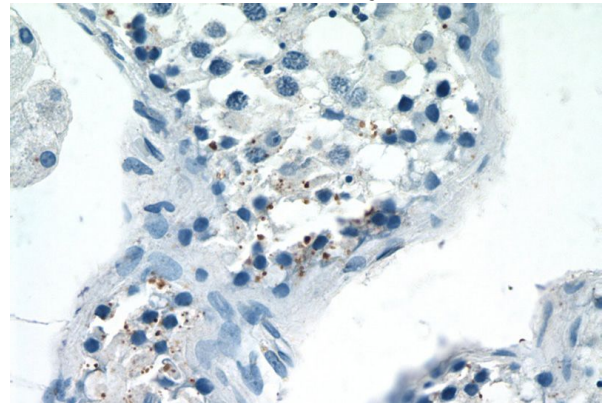
WB: 1:500-1:5000

IHC: 1:20-1:200

## Validations



mouse testis tissue were subjected to SDS PAGE followed by western blot with Catalog No:112156(LATS1 antibody) at dilution of 1:500



Immunohistochemistry of paraffin-embedded human testis tissue slide using Catalog No:112156(LATS1 Antibody) at dilution of 1:50 (under 40x lens)