

# TASP1 antibody

Catalog Number: 115856

## Product name

TASP1 antibody

WB: 1:500-1:5000

IHC: 1:20-1:200

## Specificity

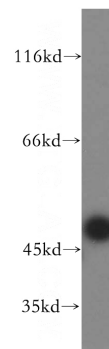
Human, Mouse, Rat; other species not tested.

IF: 1:20-1:200

## Antibody description

TASP1 Rabbit Polyclonal antibody. Positive IHC detected in human ovary tissue, human kidney tissue, human liver tissue, human lung tissue, human testis tissue. Positive IF detected in HeLa cells. Positive WB detected in HEK-293 cells, HeLa cells. Observed molecular weight by Western-blot: 50 kDa

## Validations



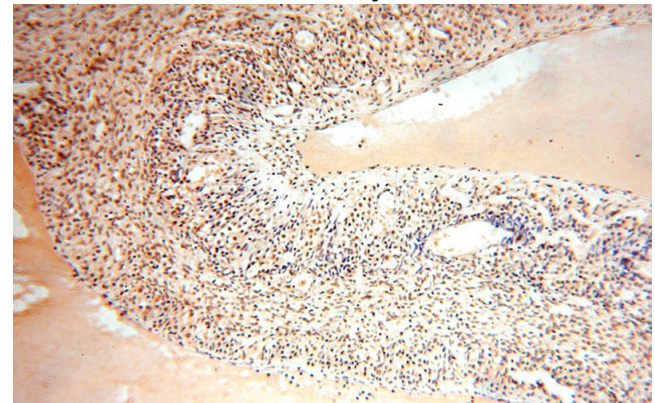
## Preparation

This antibody was obtained by immunization of TASP1 recombinant protein (Accession Number: XM\_047440267). Purification method: Antigen affinity purified.

HEK-293 cells were subjected to SDS PAGE followed by western blot with Catalog No:115856(TASP1 antibody) at dilution of 1:500

## Formulation

PBS with 0.02% sodium azide and 50% glycerol pH 7.3.



## Storage

Store at -20°C. DO NOT ALIQUOT

## Clonality

Polyclonal

## Ig Type

Rabbit IgG

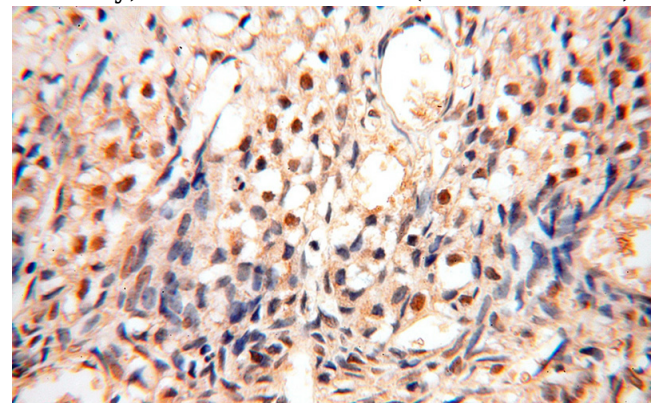
## Applications

ELISA, WB, IHC, IF

## Dilutions

Recommended Dilution:

Immunohistochemical of paraffin-embedded human ovary using Catalog No:115856(TASP1 antibody) at dilution of 1:100 (under 10x lens)

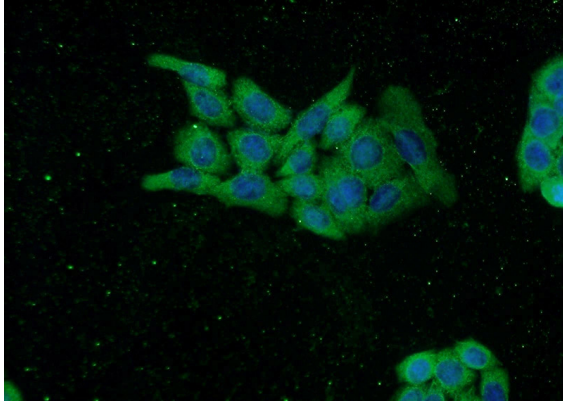


# TASP1 antibody

Catalog Number: 115856

---

Immunohistochemical of paraffin-embedded human ovary using Catalog No:115856(TASP1 antibody) at dilution of 1:100 (under 40x lens)



Immunofluorescent analysis of HeLa cells using Catalog No:115856(TASP1 Antibody) at dilution of 1:50 and Alexa Fluor 488-conjugated AffiniPure Goat Anti-Rabbit IgG(H+L)