

PKLR antibody



Catalog Number: 113856

Product name

PKLR antibody

Specificity

Human, Mouse, Rat; other species not tested.

Antibody description

PKLR Rabbit Polyclonal antibody. Positive WB detected in MCF7 cells, 293 cell, HEK-293 cells, HeLa cells, HepG2. MCF7 cells, human kidney tissue, human liver tissue, mouse heart tissue, mouse muscle/liver tissue, mouse skeletal muscle tissue, NIH/3T3 cells. Positive IHC detected in human lung cancer tissue, human breast cancer tissue. Observed molecular weight by Western-blot: 58 kDa

Preparation

This antibody was obtained by immunization of PKLR recombinant protein (Accession Number: XM_047422592). Purification method: Antigen affinity purified.

Formulation

PBS with 0.02% sodium azide and 50% glycerol pH 7.3.

Storage

Store at -20°C. DO NOT ALIQUOT

Clonality

Polyclonal

Ig Type

Rabbit IgG

Applications

ELISA, WB, IHC

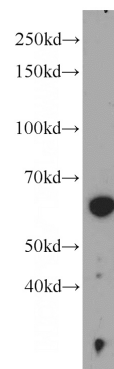
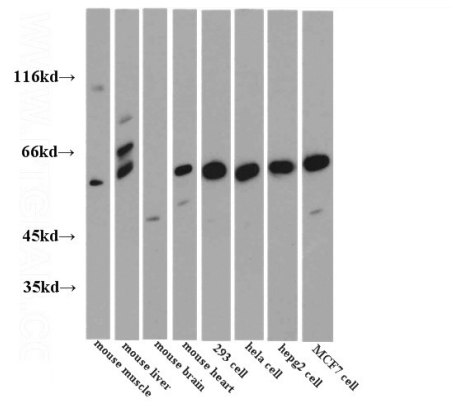
Dilutions

Recommended Dilution:

WB: 1:500-1:5000

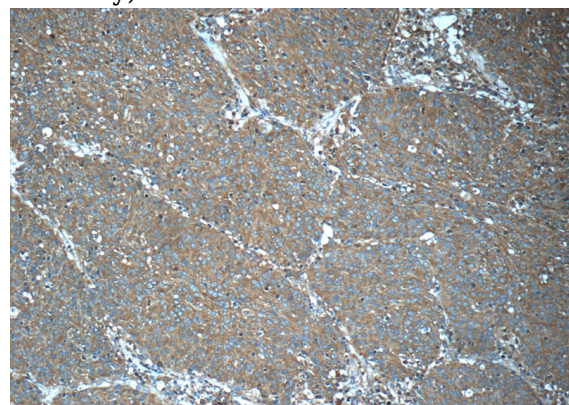
IHC: 1:20-1:200

Validations



WB results of Catalog No:113856.

MCF7 cells were subjected to SDS PAGE followed by western blot with Catalog No:113856(PKLR antibody) at dilution of 1:1000

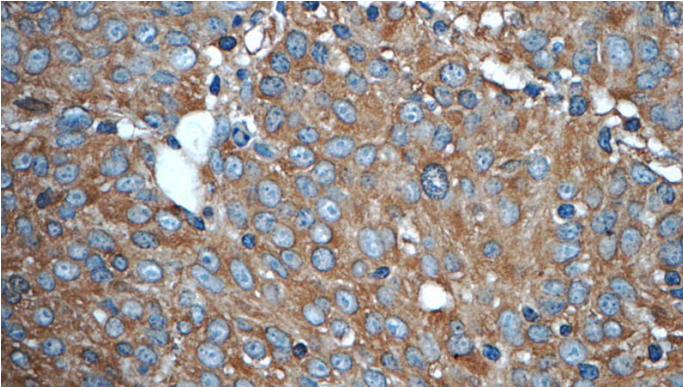


Immunohistochemistry of paraffin-embedded human lung cancer tissue slide using Catalog No:113856(PKLR Antibody) at dilution of 1:50

PKLR antibody

Catalog Number: 113856

(under 10x lens)



Immunohistochemistry of paraffin-embedded human lung cancer tissue slide using Catalog No:113856(PKLR Antibody) at dilution of 1:50 (under 40x lens)