

# Integrin alpha 6X1B-Specific antibody



Catalog Number: 111856

## Product name

Integrin alpha 6X1B-Specific antibody

## Specificity

Human, Mouse, Rat; other species not tested.

## Antibody description

Integrin alpha 6X1B-Specific Rabbit Polyclonal antibody. Positive WB detected in mouse heart tissue, mouse kidney tissue. Observed molecular weight by Western-blot: 62 kDa

## Preparation

This antibody was obtained by immunization of Peptide (Accession Number: NM\_001079818). Purification method: Antigen affinity purified.

## Formulation

PBS with 0.02% sodium azide and 50% glycerol pH 7.3.

## Storage

Store at -20°C. DO NOT ALIQUOT

## Clonality

Polyclonal

## Ig Type

Rabbit IgG

## Applications

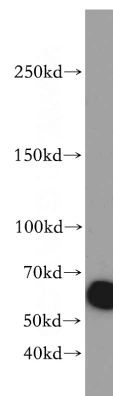
ELISA, WB

## Dilutions

Recommended Dilution:

WB: 1:500-1:5000

## Validations



mouse heart tissue were subjected to SDS PAGE followed by western blot with Catalog No:111856(ITGA6-Specific antibody) at dilution of 1:300