

# Gamma adducin antibody



Catalog Number: 110856

## Product name

Gamma adducin antibody

## Specificity

Human, Mouse, Rat; other species not tested.

## Antibody description

Gamma adducin Rabbit Polyclonal antibody. Positive IP detected in NIH/3T3 cells. Positive WB detected in K-562 cells, mouse kidney tissue, NIH/3T3 cells. Observed molecular weight by Western-blot: 80 kDa, 90 kDa

## Preparation

This antibody was obtained by immunization of Gamma adducin recombinant protein (Accession Number: XM\_024447801). Purification method: Antigen affinity purified.

## Formulation

PBS with 0.02% sodium azide and 50% glycerol pH 7.3.

## Storage

Store at -20°C. DO NOT ALIQUOT

## Clonality

Polyclonal

## Ig Type

Rabbit IgG

## Applications

ELISA, WB, IP

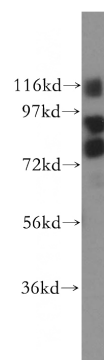
## Dilutions

Recommended Dilution:

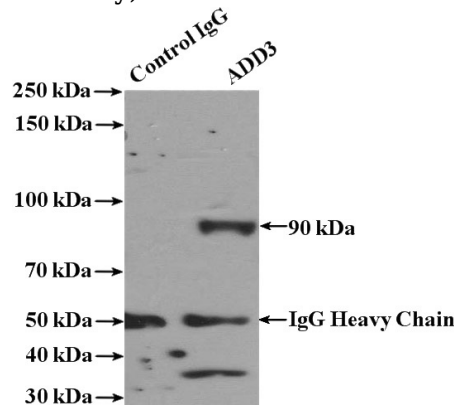
WB: 1:200-1:2000

IP: 1:200-1:2000

## Validations



K-562 cells were subjected to SDS PAGE followed by western blot with Catalog No:110856(ADD3 antibody) at dilution of 1:300



IP Result of anti-ADD3 (IP:Catalog No:110856, 4ug; Detection:Catalog No:110856 1:500) with NIH/3T3 cells lysate 3200ug.