

# MAGT1 antibody



Catalog Number: 112456

## Product name

MAGT1 antibody

Recommended Dilution:

WB: 1:500-1:5000

## Specificity

Human, Mouse, Rat; other species not tested.

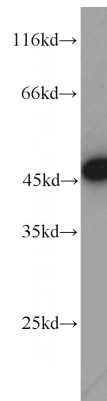
IHC: 1:20-1:200

IF: 1:10-1:100

## Antibody description

MAGT1 Rabbit Polyclonal antibody. Positive IF detected in HepG2 cells. Positive IHC detected in human liver tissue, human skeletal muscle tissue. Positive WB detected in Jurkat cells, HEK-293 cells, HeLa cells, HT-1080 cells, human liver tissue, mouse brain tissue, mouse colon tissue, mouse heart tissue, mouse kidney tissue. Observed molecular weight by Western-blot: 45-47 kDa

## Validations



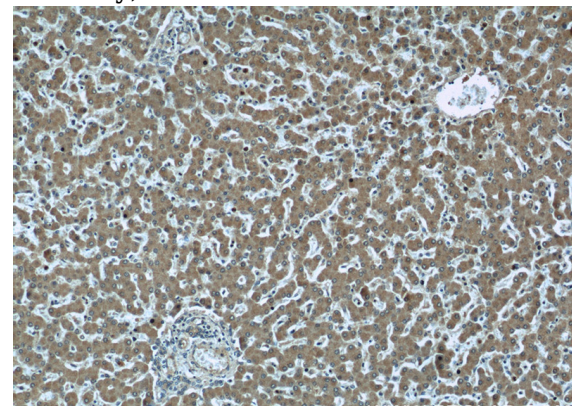
## Preparation

This antibody was obtained by immunization of MAGT1 recombinant protein (Accession Number: NM\_001367916). Purification method: Antigen affinity purified.

Jurkat cells were subjected to SDS PAGE followed by western blot with Catalog No:112456(MAGT1 antibody) at dilution of 1:1000

## Formulation

PBS with 0.02% sodium azide and 50% glycerol pH 7.3.



## Storage

Store at -20°C. DO NOT ALIQUOT

## Clonality

Polyclonal

Immunohistochemical of paraffin-embedded human liver using Catalog No:112456(MAGT1 antibody) at dilution of 1:50 (under 10x lens)

## Ig Type

Rabbit IgG

## Applications

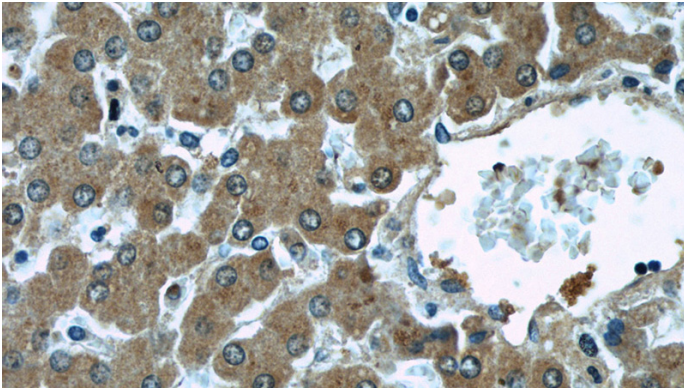
ELISA, WB, IHC, IF

## Dilutions

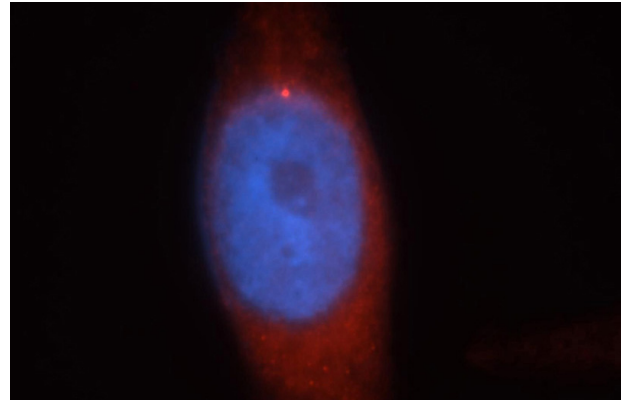
# MAGT1 antibody

Catalog Number: 112456

---



Immunohistochemical of paraffin-embedded human liver using Catalog No:112456(MAGT1 antibody) at dilution of 1:50 (under 40x lens)



Immunofluorescent analysis of HepG2 cells, using Catalog No:112456 and Rhodamine-labeled goat anti-rabbit IgG (red).Blue pseudocolor = DAPI (fluorescent DNA dye).