

# HPSE antibody

Catalog Number: 111456

## Product name

HPSE antibody

IHC: 1:20-1:200

IF: 1:10-1:100

## Specificity

Human, Mouse; other species not tested.

## Antibody description

HPSE Rabbit Polyclonal antibody. Positive IF detected in HeLa cells, HepG2 cells. Positive IHC detected in human liver cancer tissue, human placenta tissue. Positive WB detected in Jurkat cells. Observed molecular weight by Western-blot: 60 kDa

## Preparation

This antibody was obtained by immunization of HPSE recombinant protein (Accession Number: NM\_001098540). Purification method: Antigen affinity purified.

## Formulation

PBS with 0.1% sodium azide and 50% glycerol pH 7.3.

## Storage

Store at -20°C. DO NOT ALIQUOT

## Clonality

Polyclonal

## Ig Type

Rabbit IgG

## Applications

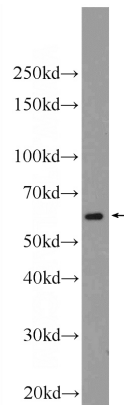
ELISA, WB, IHC, IF

## Dilutions

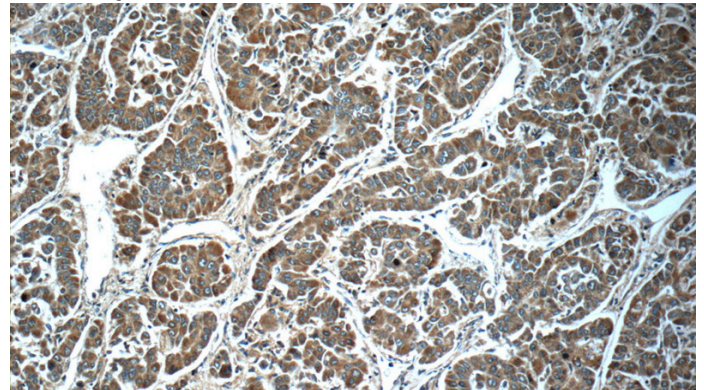
Recommended Dilution:

WB: 1:500-1:5000

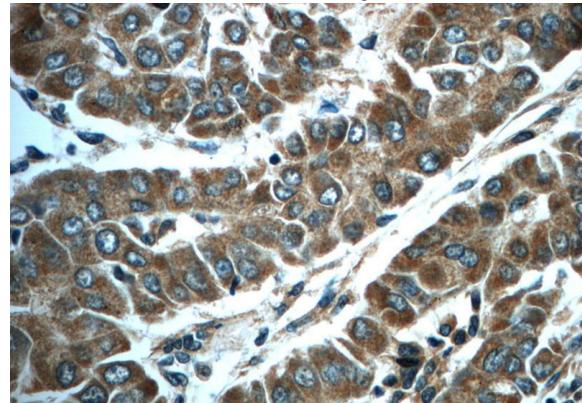
## Validations



Jurkat cells were subjected to SDS PAGE followed by western blot with Catalog No:111456(HPSE Antibody) at dilution of 1:1000



Immunohistochemistry of paraffin-embedded human liver cancer slide using Catalog No:111456(HPSE Antibody) at dilution of 1:50



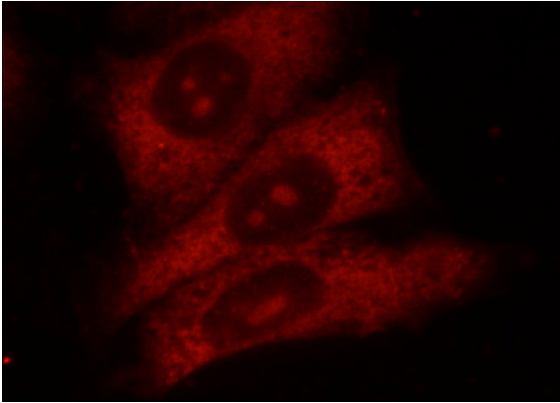
Immunohistochemistry of paraffin-embedded human liver cancer slide using Catalog

# HPSE antibody

Catalog Number: 111456

---

No:111456(HPSE Antibody) at dilution of 1:50



Immunofluorescent analysis of HeLa cells using Catalog No:111456(HPSE Antibody) at dilution of 1:25 and Rhodamine-Goat anti-Rabbit IgG