

# Annexin A2 antibody



Catalog Number: 107056

## Product name

Annexin A2 antibody

WB: 1:500-1:5000

IHC: 1:20-1:200

## Specificity

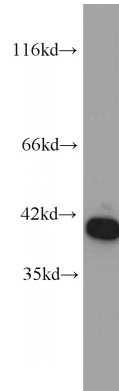
Human; other species not tested.

IF: 1:20-1:200

## Antibody description

Annexin A2 Mouse Monoclonal antibody. Positive FC detected in K-562 cells. Positive IHC detected in human breast cancer tissue, human gliomas tissue. Positive IF detected in HeLa cells. Positive WB detected in Human brain, HeLa cells, MCF7 cells. Observed molecular weight by Western-blot: 39 kDa

## Validations



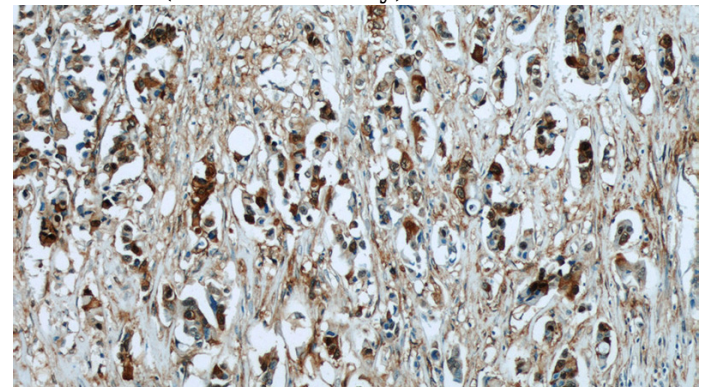
## Preparation

This antibody was obtained by immunization of Annexin A2 recombinant protein (Accession Number: XM\_017022090). Purification method: Protein A purified.

human brain tissue were subjected to SDS PAGE followed by western blot with Catalog No:107056(ANXA2 antibody) at dilution of 1:1000

## Formulation

PBS with 0.02% sodium azide and 50% glycerol pH 7.3.



## Storage

Store at -20°C. DO NOT ALIQUOT

## Clonality

Monoclonal

Immunohistochemical of paraffin-embedded human breast cancer using Catalog No:107056(ANXA2 antibody) at dilution of 1:50 (under 10x lens)

## Ig Type

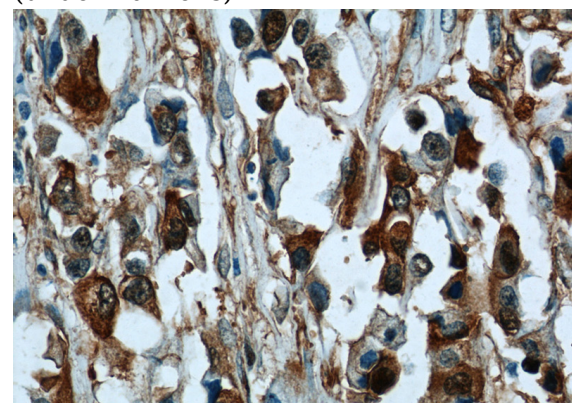
Mouse IgG2a

## Applications

ELISA, WB, IHC, IF, FC

## Dilutions

Recommended Dilution:

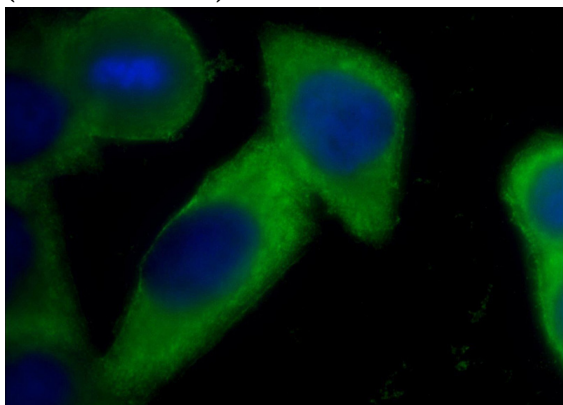


# Annexin A2 antibody

Catalog Number: 107056

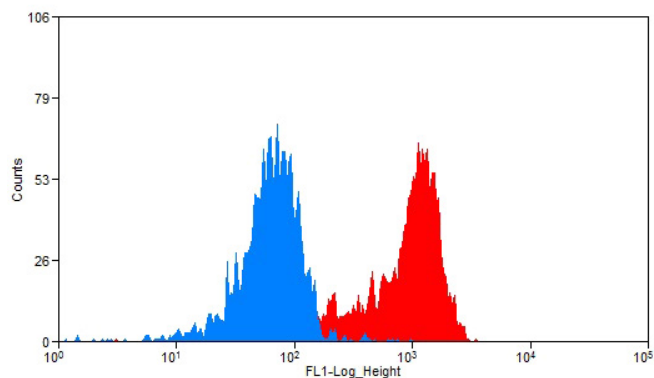
---

Immunohistochemical of paraffin-embedded human breast cancer using Catalog No:107056(ANXA2 antibody) at dilution of 1:50 (under 40x lens)



Immunofluorescent analysis of HeLa cells using Catalog No:107056(Annexin A2 Antibody) at dilution of 1:100 and Alexa Fluor 488-conjugated

AffiniPure Goat Anti-Mouse IgG(H+L)



1X10<sup>6</sup> K-562 cells were stained with 0.2ug Annexin A2 antibody (Catalog No:107056, red) and control antibody (blue). Fixed with 90% MeOH blocked with 3% BSA (30 min). Alexa Fluor 488-conjugated AffiniPure Goat Anti-Mouse IgG(H+L) with dilution 1:1500.