

# Anti-Estrogen Receptor alpha Rabbit antibody



Catalog Number: 168746

## Product name

Anti-Estrogen Receptor alpha Rabbit antibody

## Applications

WB, IHC-P, ICC/IF, FC, IP, ChIP

## Specificity

Human, Mouse, Rat

## Dilutions

1:1000

## Antibody description

Estrogen Receptor alpha Rabbit monoclonal antibody

1:50

1:50

## Preparation

Antigen: A synthetic peptide of human Estrogen Receptor alpha

1:200

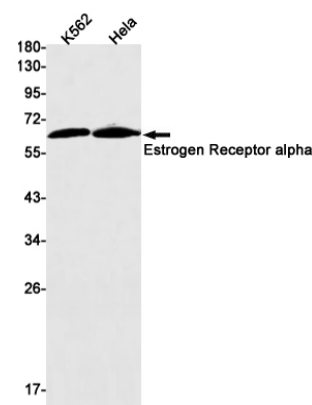
1:20

1:20

## Formulation

Supplied in 50nM Tris-Glycine(pH 7.4), 0.15M NaCl, 40%Glycerol, 0.01% sodium azide and 0.05% BSA.

## Validations



## Storage

Store at 4°C short term. Aliquot and store at -20°C long term. Avoid freeze / thaw cycle.

## Clonality

Monoclonal

## Ig Type

Rabbit IgG

Western blot detection of Estrogen Receptor alpha in K562, HeLa cell lysates using Estrogen Receptor alpha Rabbit mAb(1:1000 diluted). Predicted band size: 66kDa. Observed band size: 66kDa.