

PINK1 Polyclonal Antibody



Catalog Number: 160746

Product name

PINK1 Polyclonal Antibody

WB 1:500 - 1:2000

IHC 1:50 - 1:200

IF 1:50 - 1:200

Specificity

Human, Mouse, Rat

Antibody description

Polyclonal antibody to PINK1

Preparation

Antigen: Recombinant fusion protein containing a sequence corresponding to amino acids 282-581 of human PINK1 (NP_115785.1).

Formulation

PBS with 0.02% sodium azide, 50% glycerol, pH7.3.

Storage

Store at -20°C. Avoid freeze / thaw cycles.

Clonality

Polyclonal

Ig Type

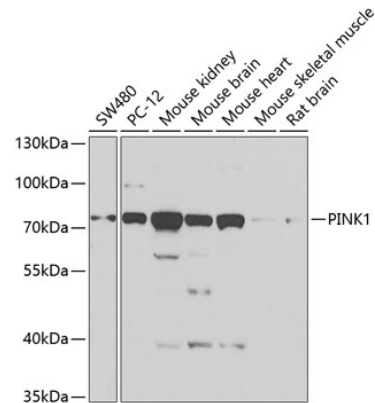
Rabbit IgG

Applications

WB, IHC, IF

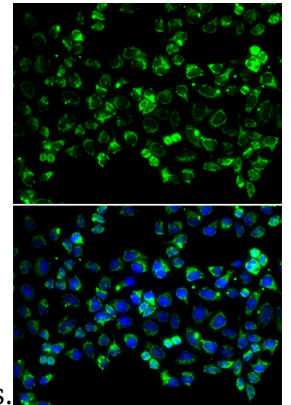
Dilutions

Validations



Western blot - PINK1 Polyclonal Antibody

Western blot analysis of extracts of various cell lines, using PINK1 antibody at 1:1000 dilution. Secondary antibody: HRP Goat Anti-Rabbit IgG (H+L) at 1:10000 dilution. Lysates/proteins: 25ug per lane. Blocking buffer: 3% nonfat dry milk in TBST. Detection: ECL



Basic Kit .Exposure time: 90s.

Immunofluorescence - PINK1 Polyclonal Antibody

Immunofluorescence analysis of HeLa cells using PINK1 antibody . Blue: DAPI for nuclear staining.