

# Anti-CXCR5 Rabbit antibody



Catalog Number: 167346

## Product name

Anti-CXCR5 Rabbit antibody

## Specificity

Human, Mouse, Rat

## Antibody description

CXCR5 Rabbit polyclonal antibody

## Preparation

Antigen: A synthetic peptide of human CXCR5

## Formulation

Supplied in 50nM Tris-Glycine(pH 7.4), 0.15M NaCl, 40%Glycerol, 0.01% sodium azide and 0.05% BSA.

## Storage

Store at -20°C. Stable for 12 months from date of receipt.

## Clonality

Polyclonal

## Ig Type

Rabbit IgG

## Applications

WB, ICC/IF, FC

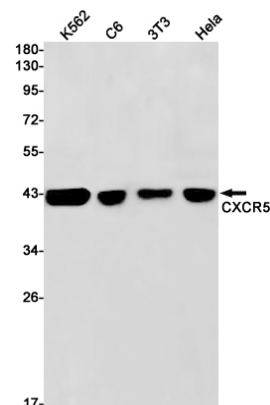
## Dilutions

WB: 1/1000-1/5000

ICC/IF: 1/50

FC: 1/20

## Validations



Western blot detection of CXCR5 in K562,C6,3T3,Hela cell lysates using CXCR5 Rabbit pAb(1:1000 diluted).Predicted band size:42kDa.Observed band size:42kDa.