

OMA1 antibody

Catalog Number: 113346

Product name

OMA1 antibody

IHC: 1:50-1:500

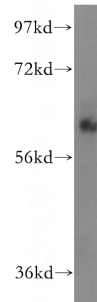
Specificity

Human, Mouse, Rat; other species not tested.

Validations

Antibody description

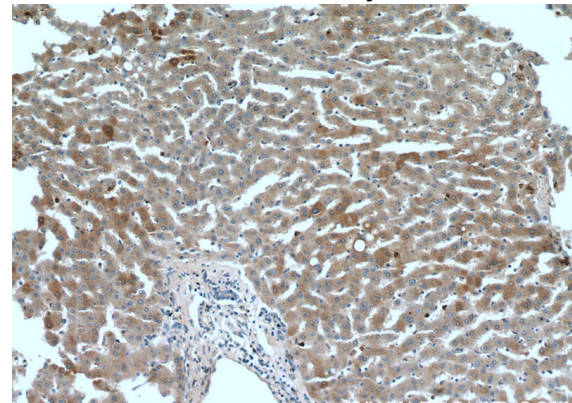
OMA1 Rabbit Polyclonal antibody. Positive IHC detected in human liver tissue. Positive WB detected in mouse liver tissue, K-562 cells. Observed molecular weight by Western-blot: 60 kDa



Preparation

This antibody was obtained by immunization of OMA1 recombinant protein (Accession Number: NM_145243). Purification method: Antigen affinity purified.

mouse liver tissue were subjected to SDS PAGE followed by western blot with Catalog No:113346(OMA1 antibody) at dilution of 1:500



Formulation

PBS with 0.02% sodium azide and 50% glycerol pH 7.3.

Storage

Store at -20°C. DO NOT ALIQUOT

Clonality

Polyclonal

Ig Type

Rabbit IgG

Applications

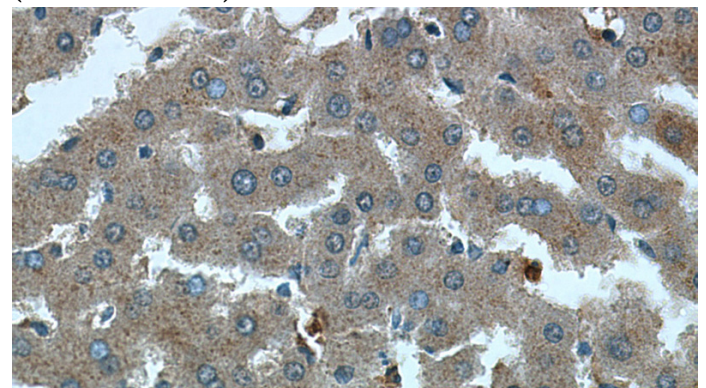
ELISA, WB, IHC

Dilutions

Recommended Dilution:

WB: 1:200-1:2000

Immunohistochemistry of paraffin-embedded human liver tissue slide using Catalog No:113346(OMA1 Antibody) at dilution of 1:200 (under 10x lens).



Immunohistochemistry of paraffin-embedded human liver tissue slide using Catalog No:113346(OMA1 Antibody) at dilution of 1:200

OMA1 antibody



Catalog Number: 113346

(under 40x lens).