

Human Cathepsin A/CTSA (His Tag) recombinant protein



Catalog Number: 502346

General Information

Gene Name Synonym

Carboxypeptidase C; Carboxypeptidase L; Cathepsin A; Protective protein cathepsin A; Protective protein for beta-galactosidase; Lysosomal protective protein 32 kDa chain; Lysosomal protective protein 20 kDa chain

Protein Construction

A DNA sequence encoding the human cathepsin A isoform b (Met 1-Tyr 480) (NP_001121167.1) was expressed with a N-terminal signal peptide and a C-terminal polyhistidine tag.

Organism

Human

Expression Host

Human Cells

QC Testing

Purity

> 90 % as determined by SDS-PAGE

Endotoxin

< 1.0 EU per μg of the protein as determined by the LAL method

Stability

Samples are stable for up to twelve months from date of receipt at -70°C

Predicted N terminal

Ala 29

Molecular Mass

The secreted recombinant human CTSA existing as a single-chain form consists of 463 amino acids and has a predicted molecular mass of 53 kDa as estimated by SDS-PAGE under reducing conditions.

Formulation

Lyophilized from sterile 25mM Tris, 0.15mM NaCl, pH 7.5

1. 5 % trehalose and mannitol are added as protectants before lyophilization.
2. Please contact us for any concerns or special requirements.

Usage Guide

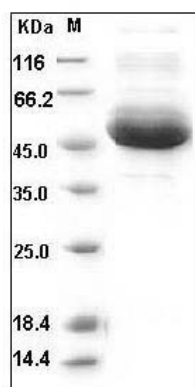
Storage

Store it under sterile conditions at -20°C to -80°C . It is recommended that the protein be aliquoted for optimal storage. Avoid repeated freeze-thaw cycles.

Reconstitution

Adding sterile water, prepare a stock solution of 0.25 mg/ml. Concentration is measured by UV-Vis.

SDS-PAGE



Human Cathepsin A / CTSA Protein (His Tag) SDS-PAGE