

# EPCAM antibody

Catalog Number: 110346

## Product name

EPCAM antibody

Recommended Dilution:

WB: 1:200-1:2000

## Specificity

Human, Mouse; other species not tested.

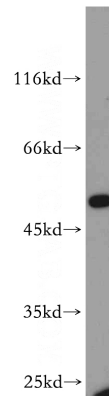
IHC: 1:20-1:200

IF: 1:20-1:200

## Antibody description

EPCAM Rabbit Polyclonal antibody. Positive WB detected in A431 cells, COLO 320 cells, MCF7 cells, mouse colon tissue. Positive IHC detected in human breast cancer tissue, human colon cancer tissue, human colon tissue, human lung cancer tissue, human lung tissue, human stomach cancer tissue. Positive IF detected in A431 cells. Observed molecular weight by Western-blot: 40 kDa, 45-50 kDa

## Validations



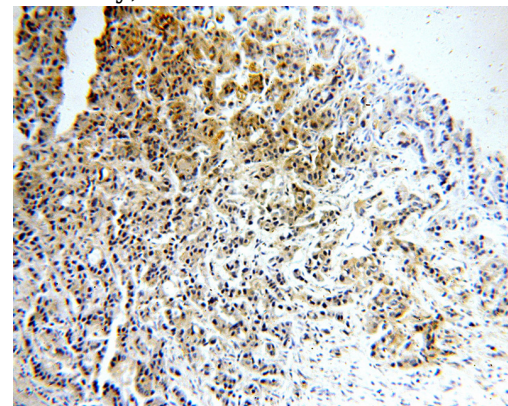
## Preparation

This antibody was obtained by immunization of EPCAM recombinant protein (Accession Number: NM\_002354). Purification method: Antigen affinity purified.

A431 cells were subjected to SDS PAGE followed by western blot with Catalog No:110346(EPCAM antibody) at dilution of 1:200

## Formulation

PBS with 0.02% sodium azide and 50% glycerol pH 7.3.



## Storage

Store at -20°C. DO NOT ALIQUOT

## Clonality

Polyclonal

Immunohistochemical of paraffin-embedded human breast cancer using Catalog No:110346(EPCAM antibody) at dilution of 1:100 (under 10x lens)

## Ig Type

Rabbit IgG

## Applications

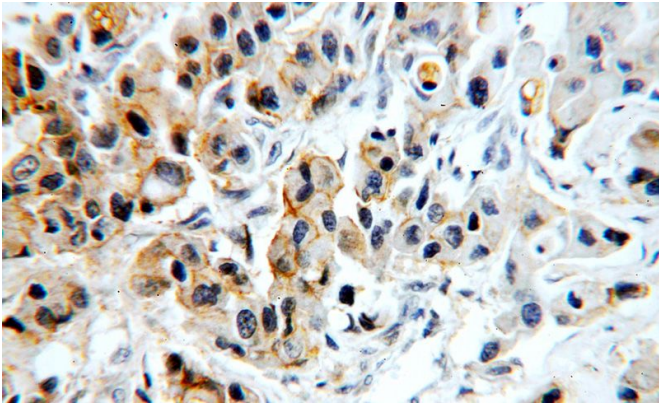
ELISA, WB, IHC, IF

## Dilutions

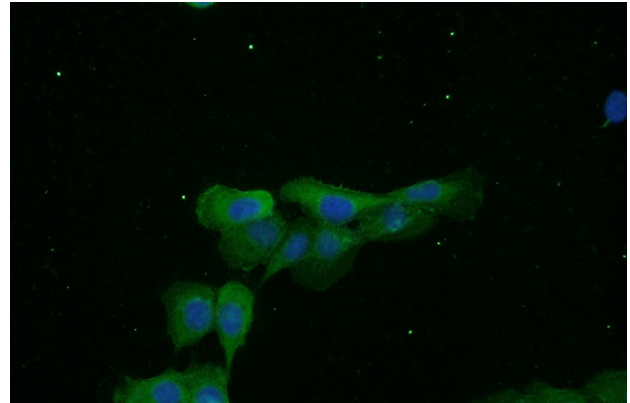
# EPCAM antibody

Catalog Number: 110346

---



Immunohistochemical of paraffin-embedded human breast cancer using Catalog No:110346(EPCAM antibody) at dilution of 1:100 (under 40x lens)



Immunofluorescent analysis of A431 cells using Catalog No:110346(EPCAM Antibody) at dilution of 1:50 and Alexa Fluor 488-conjugated AffiniPure Goat Anti-Rabbit IgG(H+L)