

CXCR7 antibody

Catalog Number: 109646

Product name

CXCR7 antibody

Specificity

Human, Mouse, Rat; other species not tested.

Antibody description

CXCR7 Rabbit Polyclonal antibody. Positive FC detected in Raji cells. Positive IHC detected in human kidney tissue, human brain tissue, human liver tissue, human lung tissue, human pancreas cancer tissue, human placenta tissue, human spleen tissue, human testis tissue. Positive IF detected in HepG2 cells. Positive WB detected in C6 cells, A549 cells. Observed molecular weight by Western-blot: 50 kDa

Preparation

This antibody was obtained by immunization of Peptide (Accession Number: XM_047445135). Purification method: Antigen affinity purified.

Formulation

PBS with 0.1% sodium azide and 50% glycerol pH 7.3.

Storage

Store at -20°C. DO NOT ALIQUOT

Clonality

Polyclonal

Ig Type

Rabbit IgG

Applications

ELISA, IHC, IF, WB, FC

Dilutions

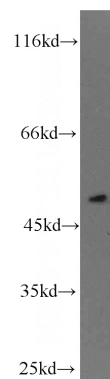
Recommended Dilution:

WB: 1:200-1:1000

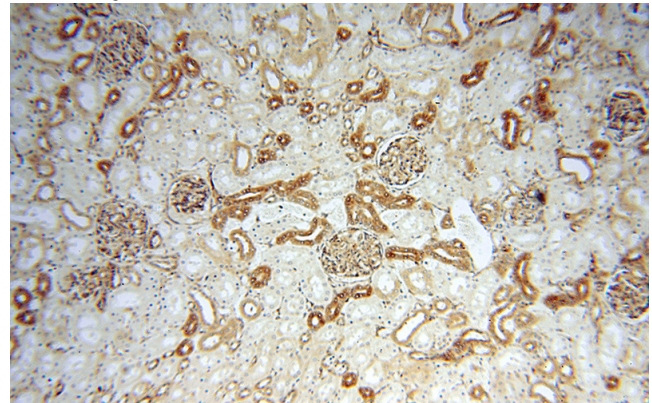
IHC: 1:20-1:200

IF: 1:10-1:100

Validations



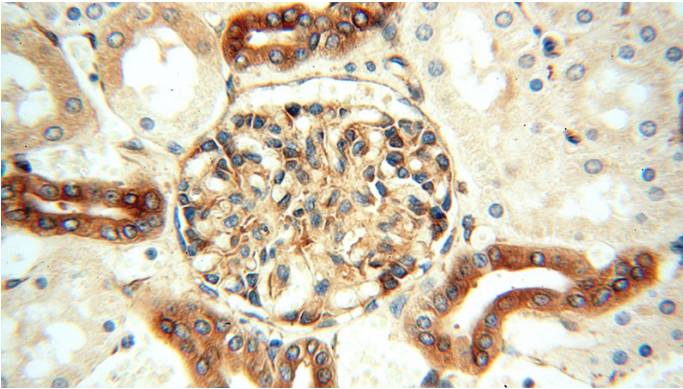
C6 cells were subjected to SDS PAGE followed by western blot with Catalog No:109646(CXCR7 antibody) at dilution of 1:200



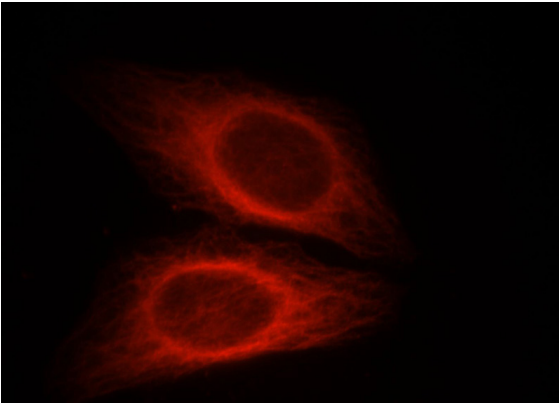
Immunohistochemical of paraffin-embedded human kidney using Catalog No:109646(CXCR7 antibody) at dilution of 1:50 (under 10x lens)

CXCR7 antibody

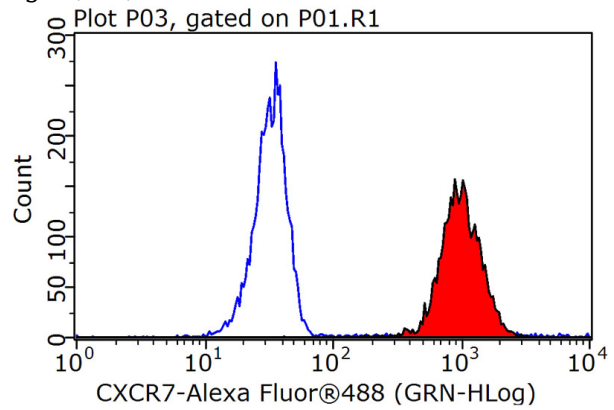
Catalog Number: 109646



Immunohistochemical of paraffin-embedded human kidney using Catalog No:109646(CXCR7 antibody) at dilution of 1:50 (under 40x lens)



Immunofluorescent analysis of HepG2 cells, using CXCR7 antibody Catalog No:109646 at 1:25 dilution and Rhodamine-labeled goat anti-rabbit IgG (red).



1×10^6 Raji cells were stained with 0.2ug CXCR7 antibody (Catalog No:109646, red) and control antibody (blue). Fixed with 90% MeOH blocked with 3% BSA (30 min). Alexa Fluor 488-conjugated AffiniPure Goat Anti-Rabbit IgG(H+L) with dilution 1:1000.